

**CITY OF LA VISTA
MAYOR AND CITY COUNCIL REPORT
DECEMBER 7, 2021 AGENDA**

Subject:	Type:	Submitted By:
AMEND SECTION 11.05 OF MUNICIPAL CODE - WARD BOUNDARIES	RESOLUTION ♦ ORDINANCE RECEIVE/FILE	PAM BUETHE CITY CLERK

SYNOPSIS

Two ward boundary map options have been created and corresponding ordinances prepared to amend Section 11.05 of the La Vista Municipal Code, bringing the legal description of the boundary lines for all wards of the City into compliance with the redistricting of wards after the 2020 Census.

FISCAL IMPACT

None.

RECOMMENDATION

Discussion, selection and approval of Option 1 or Option 2.

BACKGROUND

In August 2021 the U.S. Census Bureau released local-level 2020 census population information.

In September 2021 the Nebraska Legislature convened in special session to redraw Legislative and Congressional District boundaries for the entire State of Nebraska. In late September 2021 the Legislature approved the new boundaries and the Election Commissioner began the creation of new precinct boundaries (determined by the number of voters in the last election). On November 1, 2021 the Election Commissioner sent the new precinct boundaries to municipalities.

Staff has reviewed the U.S. Census block data and developed two options to equally divide the wards. These are presented for discussion and action at this meeting.

State Statute requires that the range of deviation between ward population shall not exceed 10% and each voting precinct cannot include more than 2 wards in its boundaries.

Municipality ward boundaries must be approved and sent to the Election Commission prior to December 30, 2021. Due to the short time frame given to adopt the new ward boundaries this year, the City Council may vote to waive the three separate readings and adopt the ordinance at this meeting.

As the city continues to grow and annex areas to the west, the east boundary line of Ward 4 will continue to move west. If the City annexes in the next 10 years we will need to look at Ward boundaries again and possibly redistrict a second time prior to the 2030 U. S. Census.

ORDINANCE NO. _____

AN ORDINANCE OF THE CITY OF LA VISTA, SARPY COUNTY, NEBRASKA, TO AMEND THE LA VISTA MUNICIPAL CODE SECTION 11.05; TO REPEAL CONFLICTING ORDINANCES PREVIOUSLY ENACTED; TO PROVIDE FOR SEVERABILITY; AND TO PROVIDE FOR THE EFFECTIVE DATE HEREOF.

BE IT ORDAINED BY THE MAYOR AND CITY COUNCIL OF THE CITY OF LA VISTA, SARPY COUNTY, NEBRASKA:

SECTION 1. Section 11.05 of the La Vista Municipal Code is amended to read as follows:

§ 11.05 WARDS.

(A) *Ward One*: shall be comprised of the specific area lying between the boundaries described as follows:

(1) *North Boundary*: North corporate limits from Gertrude Street to the northeast corner of Block 1003 of Census Tract 010615.

(2) *East Boundary*: East corporate limits from the northeast corner of Block 1003 of Census Tract 010615 to south corporate limits at 66th Street and Giles Road.

(3) *South Boundary*: South corporate limits from 66th Street to 72nd Street, 72nd Street to Valley Road, Valley Road to Edgewood Boulevard.

(4) *West Boundary*: Edgewood Boulevard from Valley Road to Park View Boulevard, Park View Boulevard to Lillian Avenue, Lillian Avenue to 76th Avenue, 76th Avenue to Terry Drive, Joseph Avenue from Terry Drive to 75th Avenue, 75th Avenue to Josephine Street, Josephine Street to 76th Street, 76th Street to Gertrude Street, Gertrude Street northwesterly to corporate limits.

(B) *Ward Two*: shall be comprised of the specific area lying between the boundaries described as follows:

(1) *North Boundary*: North corporate limits from 96th Street to Gertrude Street

(2) *East Boundary*: Beginning at north corporate limits and Gertrude Street, Gertrude Street to 76th Street, 76th Street to Josephine Street, Josephine Street to 75th Avenue, 75th Avenue to Joseph Avenue, Joseph Avenue to Terry Drive, 76th Avenue from Terry Drive to Lillian Avenue.

(3) *South Boundary*: Lillian Avenue to Park View Boulevard, Park View Boulevard to 78th Street, from 78th Street and Park View Boulevard along the southerly boundary of Block 3004 of Census Tract 010614 to 84th Street, from the southwest corner of Block 3004 of Census Tract 010614 continuing westerly along the south boundary of the Park View Heights and Park View Heights 2nd Addition subdivisions to Elm Drive, Elm Drive to Park View Boulevard, Park View Boulevard to 95th Street, 95th Street to Granville Parkway, Granville Parkway to 96th Street.

(4) *West Boundary*: 96th Street from Granville Parkway north to corporate limits at Harrison Street

(C) *Ward Three*: shall be comprised of the specific area lying between the boundaries described as follows:

(1) *North Boundary*: Brentwood Drive from 96th Street to 92nd Street, 92nd Street to Granville Parkway, Granville Parkway to Elm Drive, from Elm Drive continuing easterly along the south boundary of the Park View Heights 2nd Addition and Park View Heights subdivisions to 84th Street, from the southwest corner of Block 3004 of Census Tract 010614 at 84th Street continuing easterly along the southerly boundary of Block 3004 of Census Tract 010614 to 78th & Park View Boulevard, Park View Boulevard to Edgewood Boulevard, Edgewood Boulevard to Valley Road, Valley Road to 72nd Street

(2) *East Boundary*: 72nd Street from Valley Road to south corporate limits at Giles

Road.

(3) *South Boundary*: South corporate limits from 72nd Street to 96th Street.

(4) *West Boundary*: 96th Street from south corporate limits at Giles Road to Brentwood Drive.

(D) *Ward Four*: shall be comprised of the specific area lying between the boundaries described as follows:

(1) *North Boundary*: North corporate limits from Giles Road to 104th Street, continuing along the west and south boundaries of the Cimarron Woods subdivision to 96th Street, Granville Parkway from 96th Street to 95th Street, 95th Street to Park View Boulevard, Park View Boulevard to Elm Drive.

(2) *East Boundary*: Elm Drive from Park View Boulevard to Granville Parkway, Granville Parkway to 92nd Street, 92nd Street to Brentwood Drive, Brentwood Drive to 96th Street, 96th Street to south corporate limits.

(3) *South Boundary*: South corporate limits from 96th Street to I-80 and approximately West Giles Road, excluding land area bounded by corporate limits but not within the City.

(4) *West Boundary*: West corporate limits from approximately West Giles Road and Interstate 80 north to Giles Road and Harrison Street.
(Ord. 796, passed 12-7-99; Am. Ord. 996, passed 6-20-06; Am. Ord. 1049, passed 11-6-07; Am. Ord. 1205, passed 11-17-13; Am. Ord. _____, passed _____)

SECTION 2. Repeal of Conflicting Ordinances. All ordinances and parts of ordinances as previously enacted that are in conflict with this Ordinance or any part hereof are hereby repealed.

SECTION 3. Severability. If any section, subsection, sentence, clause or phrase of this Ordinance is, for any reason, held to be unconstitutional or invalid, such unconstitutionality or invalidity shall not affect the validity or constitutionality of the remaining portions of this Ordinance. The Mayor and City Council of the City of La Vista hereby declare that it would have passed this Ordinance and each section, subsection, sentence, clause or phrase thereof, irrespective of the fact that any one or more sections, subsections, sentences, clauses or phrases be declared unconstitutional or invalid.

SECTION 4. Effective Date. This Ordinance shall be in full force and effect from and after passage, approval and publication in pamphlet form as provided by law.

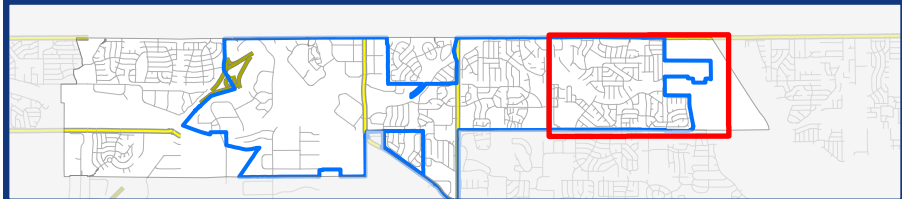
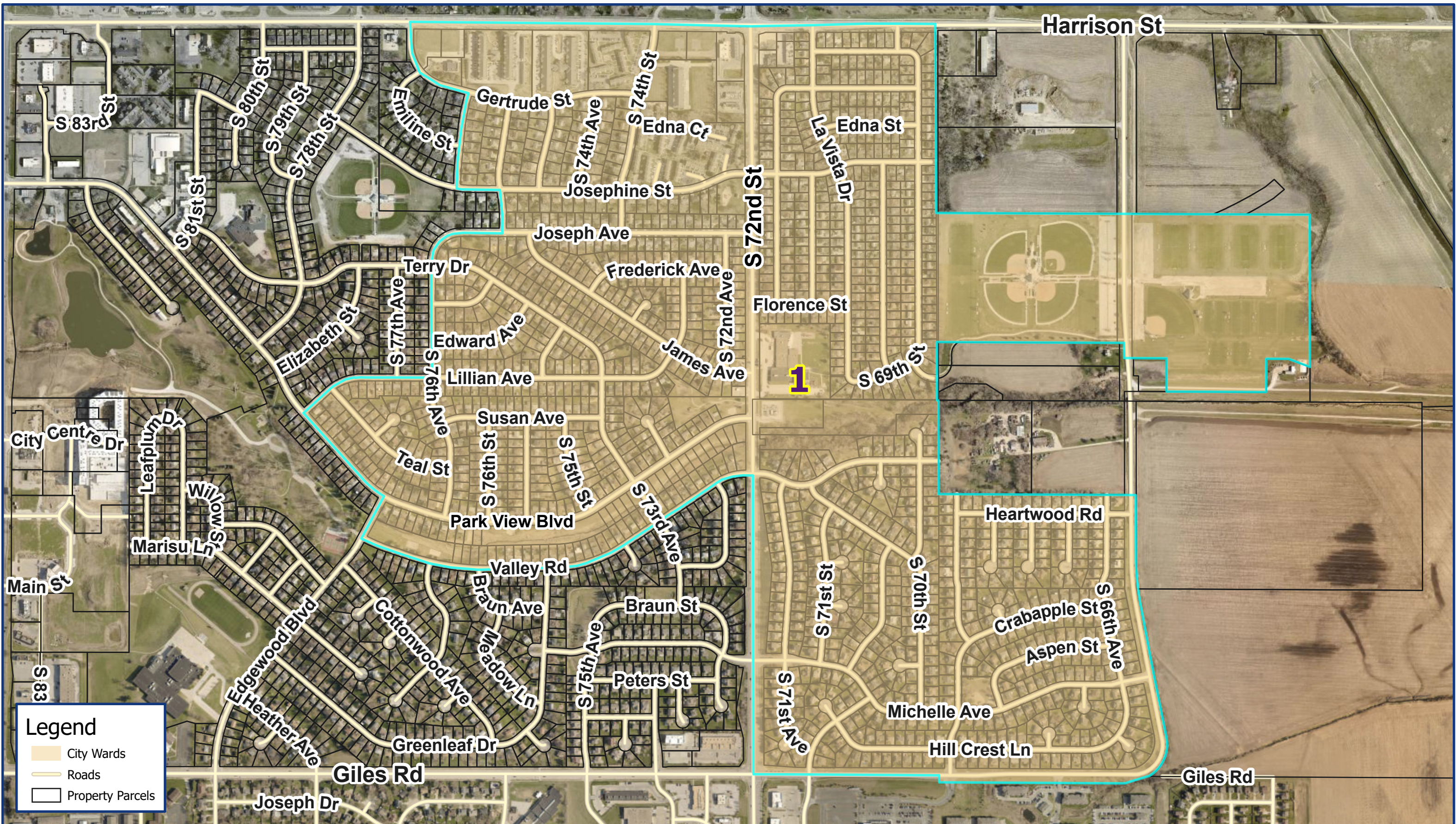
PASSED AND APPROVED THIS 7TH DAY OF DECEMBER 2021.

CITY OF LA VISTA

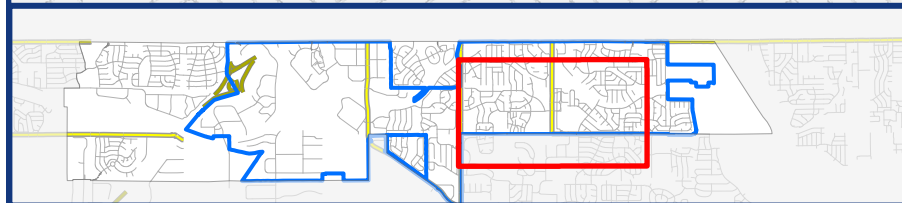
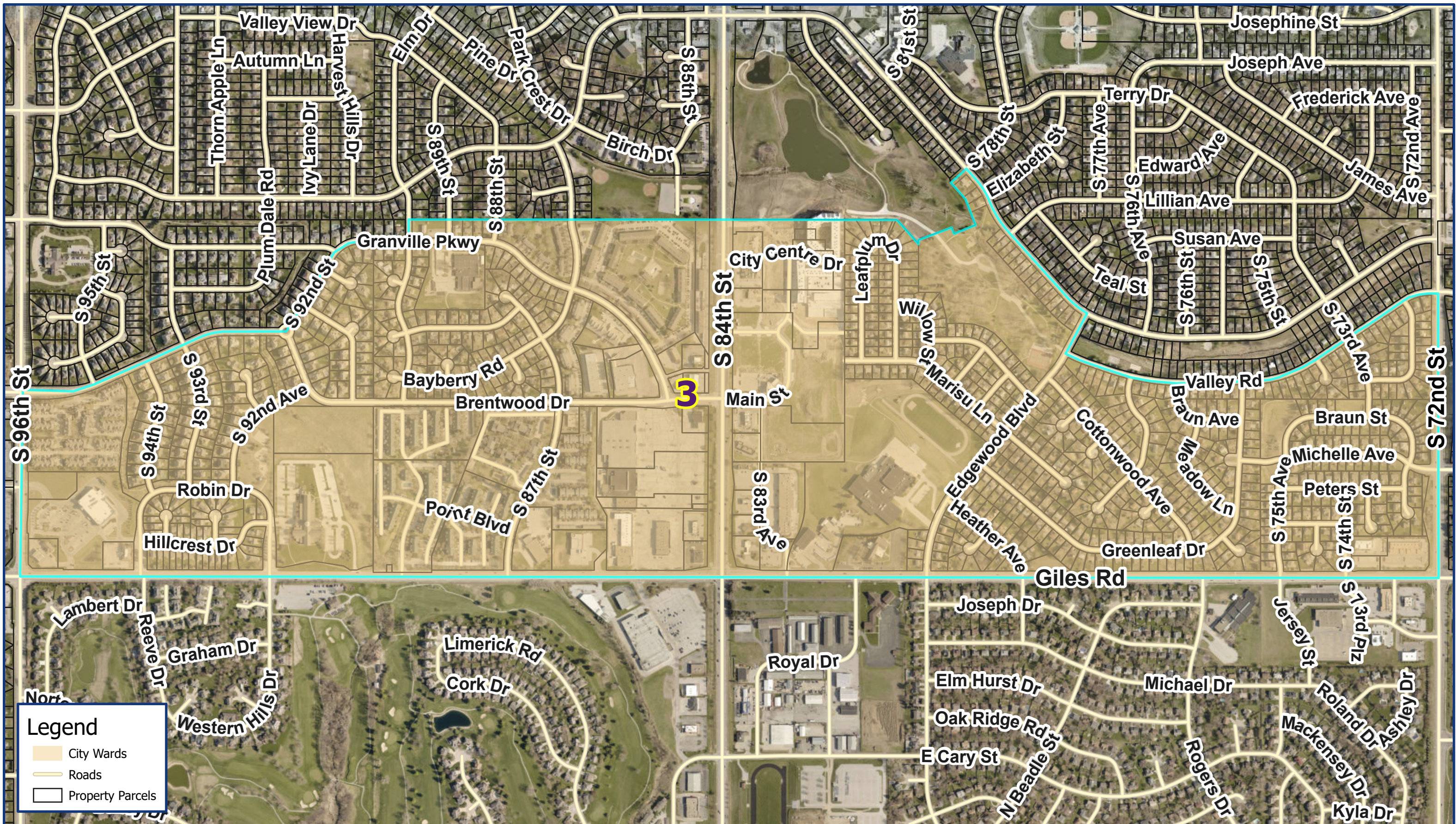
Douglas Kindig, Mayor

ATTEST:

Pamela A. Buethe, CMC
City Clerk



Option 1 - Ward #1



Option 1 - Ward #3

ORDINANCE NO. _____

AN ORDINANCE OF THE CITY OF LA VISTA, SARPY COUNTY, NEBRASKA, TO AMEND THE LA VISTA MUNICIPAL CODE SECTION 11.05; TO REPEAL CONFLICTING ORDINANCES PREVIOUSLY ENACTED; TO PROVIDE FOR SEVERABILITY; AND TO PROVIDE FOR THE EFFECTIVE DATE HEREOF.

BE IT ORDAINED BY THE MAYOR AND CITY COUNCIL OF THE CITY OF LA VISTA, SARPY COUNTY, NEBRASKA:

SECTION 1. Section 11.05 of the La Vista Municipal Code is amended to read as follows:

§ 11.05 WARDS.

(A) *Ward One*: shall be comprised of the specific area lying between the boundaries Described as follows:

(1) *North Boundary*: North corporate limits from Gertrude Street to the northeast corner of Block 1003 of Census Tract 010615.

(2) *East Boundary*: East corporate limits from the northeast corner of Block 1003 of Census Tract 010615 to south corporate limits at 66th Street and Giles Road.

(3) *South Boundary*: South corporate limits from 66th Street to 72nd Street, 72nd Street to Valley Road, Valley Road to Edgewood Boulevard.

(4) *West Boundary*: Edgewood Boulevard from Valley Road to Park View Boulevard, Park View Boulevard to Lillian Avenue, Lillian Avenue to 77th Avenue, 77th Avenue to Terry Drive, Terry Drive to Joseph Avenue, Joseph Avenue to 75th Avenue, 75th Avenue to Josephine Street, Josephine Street to 76th Street, 76th Street to Gertrude Street, Gertrude Street northwesterly to corporate limits.

(B) *Ward Two*: shall be comprised of the specific area lying between the boundaries described as follows:

(1) *North Boundary*: North corporate limits from 96th Street to Gertrude Street.

(2) *East Boundary*: Beginning at north corporate limits and Gertrude Street, Gertrude Street to 76th Street, 76th Street to Josephine Street, Josephine Street to 75th Avenue, 75th Avenue to Joseph Avenue, Joseph Avenue to Terry Drive, Terry Drive to 77th Avenue, 77th Avenue to Lillian Avenue.

(3) *South Boundary*: Lillian Avenue to Park View Boulevard, Park View Boulevard to 78th Street, from 78th Street and Park View Boulevard along the southerly boundary of Block 3004 of Census Tract 010614 to 84th Street, from the southwest corner of Block 3004 of Census Tract 010614 at 84th Street continuing westerly along the south boundary of the Park View Heights, Park View Heights 2nd Addition, S & S's Harvest Hill, and Southwind Two subdivisions to 96th Street.

(4) *West Boundary*: 96th Street from Granville Parkway north to corporate limits at Harrison Street.

(C) *Ward Three*: shall be comprised of the specific area lying between the boundaries described as follows:

(1) *North Boundary* – Brentwood Drive from 96th Street to 92nd Street, 92nd Street to Granville Parkway, Granville Parkway to Elm Drive, Elm Drive to the south boundary of Park View Heights 2nd Addition, from Elm Drive continuing easterly along the south boundary of the Park View Heights 2nd Addition and Park View Heights subdivisions to 84th Street, from the southwest corner of Block 3004 of Census Tract 010614 at 84th Street continuing easterly along the southerly boundary of Block 3004 of Census Tract 010614 to 78th & Park View Boulevard, Park View Boulevard to Edgewood Boulevard, Edgewood Boulevard to Valley

Road, Valley Road to 72nd Street.

- (2) *East Boundary:* 72nd Street from Valley Road to south corporate limits at Giles Road.
 - (3) *South Boundary:* South corporate limits from 72nd Street to 96th Street.
 - (4) *West Boundary:* 96th Street from south corporate limits at Giles Road to Brentwood Drive.
- (D) *Ward Four:* shall be comprised of the specific area lying between the boundaries described as follows:

- (1) *North Boundary:* North corporate limits from Giles Road to 104th Street, continuing along the west and south boundaries of the Cimarron Woods subdivision to 96th Street, easterly along the south boundary of the Southwind Two, S&S's Harvest Hill, and Park View Heights 2nd Addition to Elm Drive.
- (2) *East Boundary:* Elm Drive from the south boundary of the Park View Heights 2nd Addition subdivision to Granville Parkway, Granville Parkway to 92nd Street, 92nd Street to Brentwood Drive, Brentwood Drive to 96th Street, 96th Street to south corporate limits.
- (3) *South Boundary:* South corporate limits from 96th Street to I-80 and approximately West Giles Road, excluding land area bounded by corporate limits but not within the City.
- (4) *West Boundary:* West corporate limits from approximately West Giles Road and Interstate 80 north to Giles Road and Harrison Street.
(Ord. 796, passed 12-7-99; Am. Ord. 996, passed 6-20-06; Am. Ord. 1049, passed 11-6-07; Am. Ord. 1205, passed 11-17-13; Am. Ord _____, passed _____)

SECTION 2. Repeal of Conflicting Ordinances. All ordinances and parts of ordinances as previously enacted that are in conflict with this Ordinance or any part hereof are hereby repealed.

SECTION 3. Severability. If any section, subsection, sentence, clause or phrase of this Ordinance is, for any reason, held to be unconstitutional or invalid, such unconstitutionality or invalidity shall not affect the validity or constitutionality of the remaining portions of this Ordinance. The Mayor and City Council of the City of La Vista hereby declare that it would have passed this Ordinance and each section, subsection, sentence, clause or phrase thereof, irrespective of the fact that any one or more sections, subsections, sentences, clauses or phrases be declared unconstitutional or invalid.

SECTION 4. Effective Date. This Ordinance shall be in full force and effect from and after passage, approval and publication in pamphlet form as provided by law.

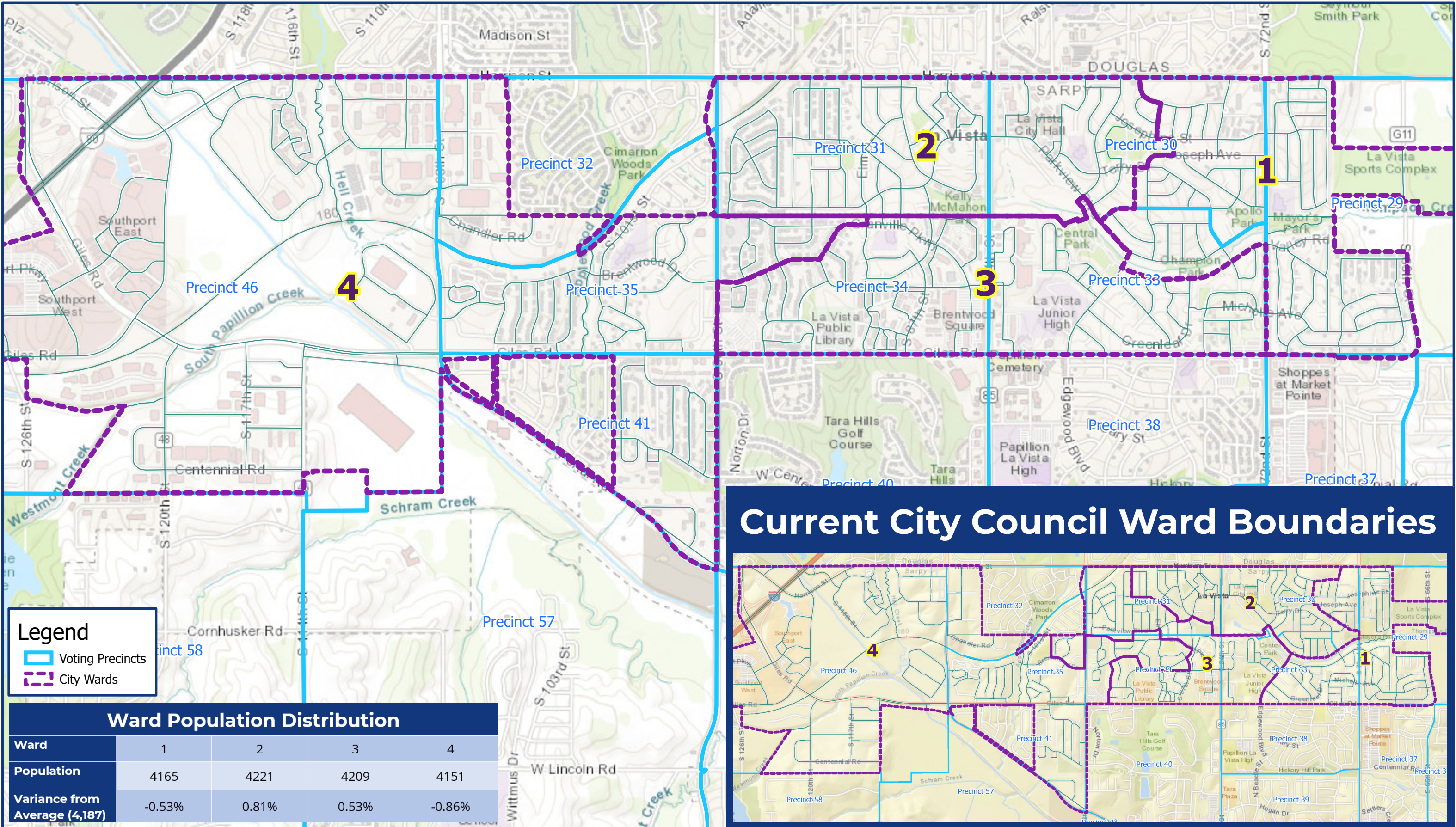
PASSED AND APPROVED THIS 7TH DAY OF DECEMBER 2021.

CITY OF LA VISTA

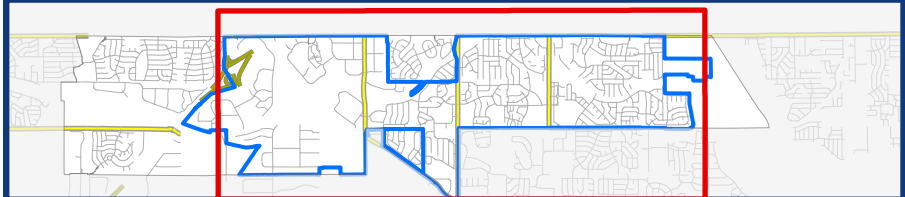
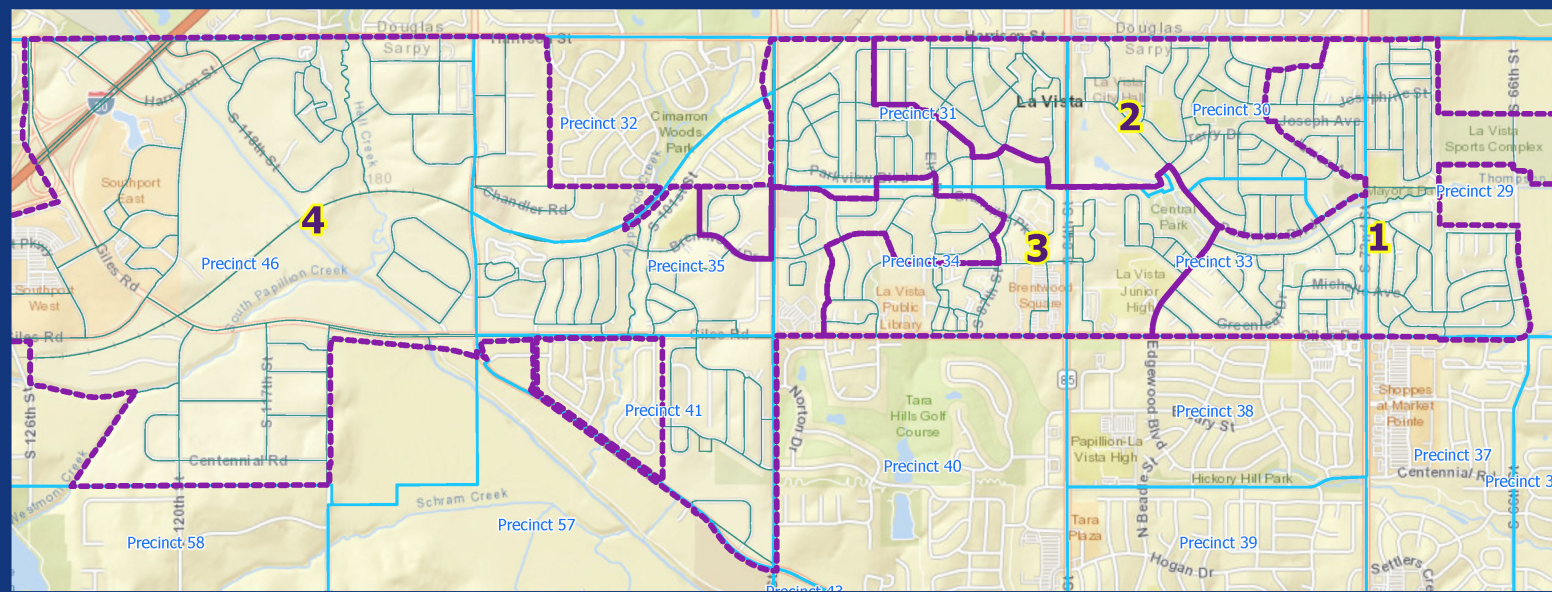
Douglas Kindig, Mayor

ATTEST:

Pamela A. Buethe, CMC
City Clerk

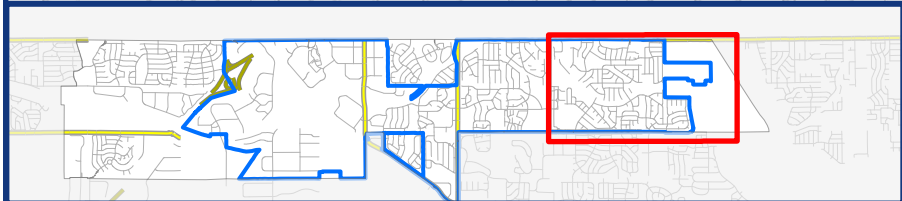
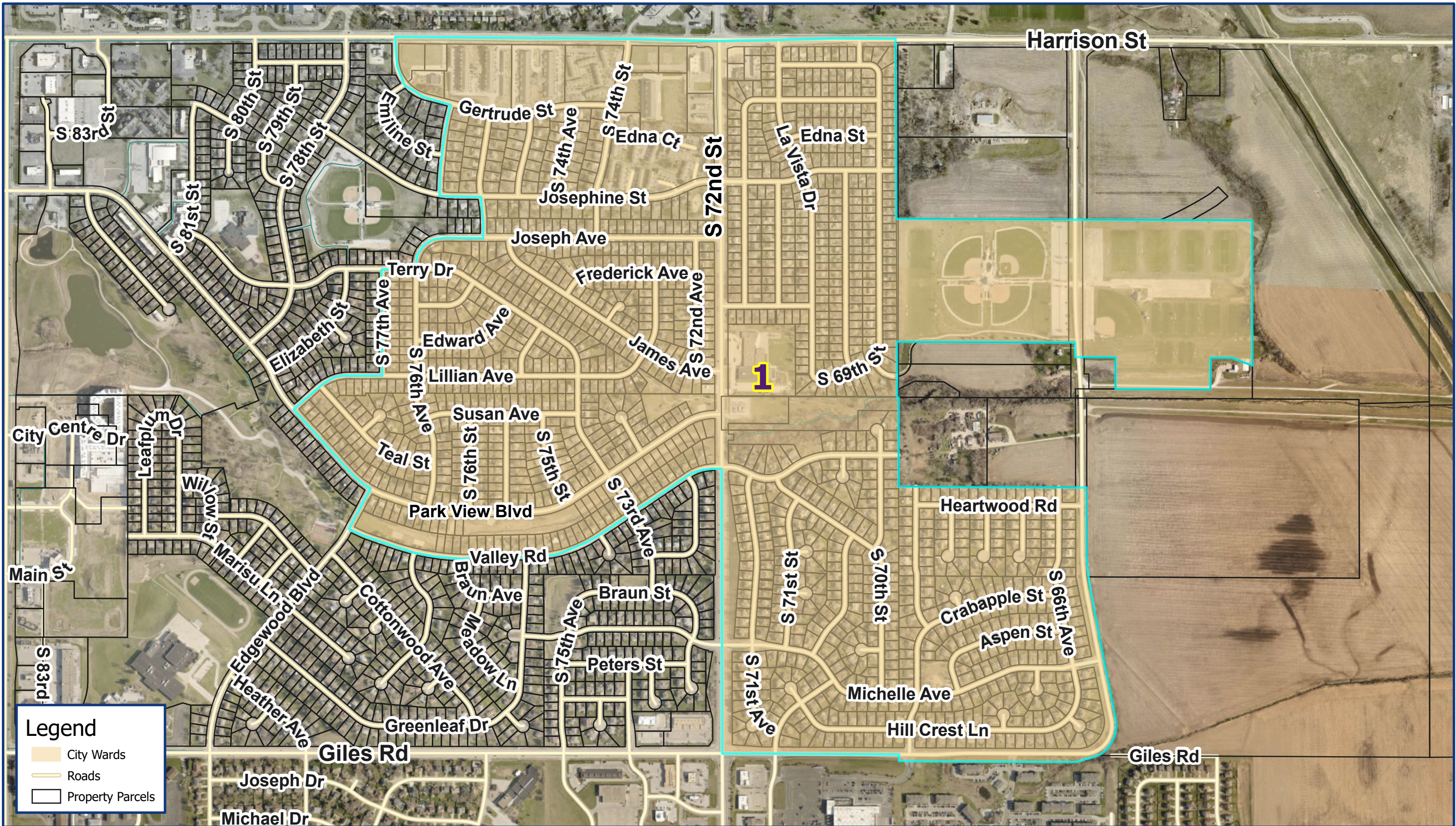


Current City Council Ward Boundaries

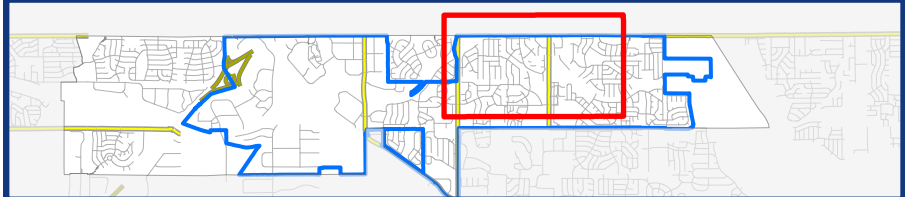
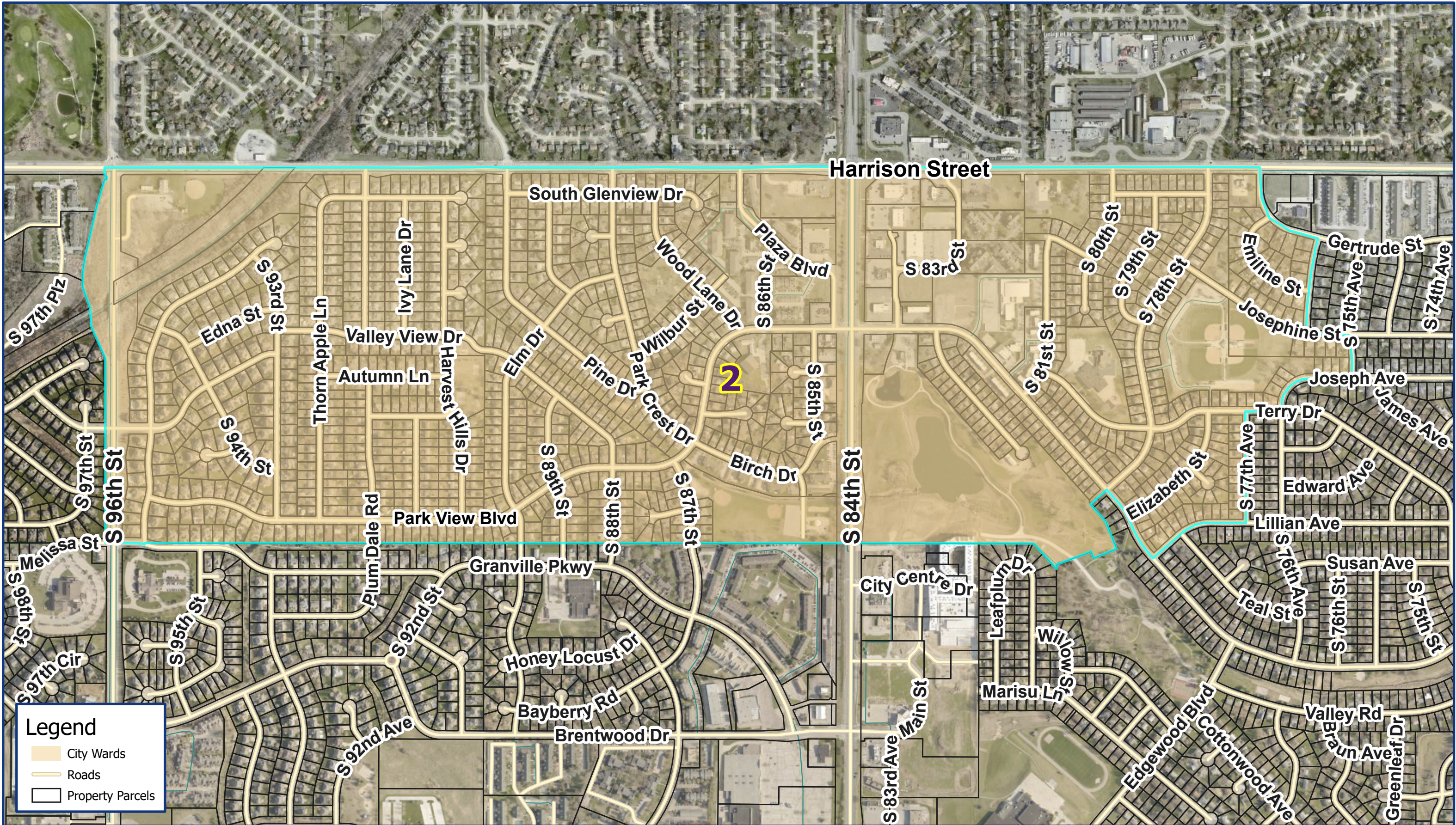


Redistricting Map Option 2

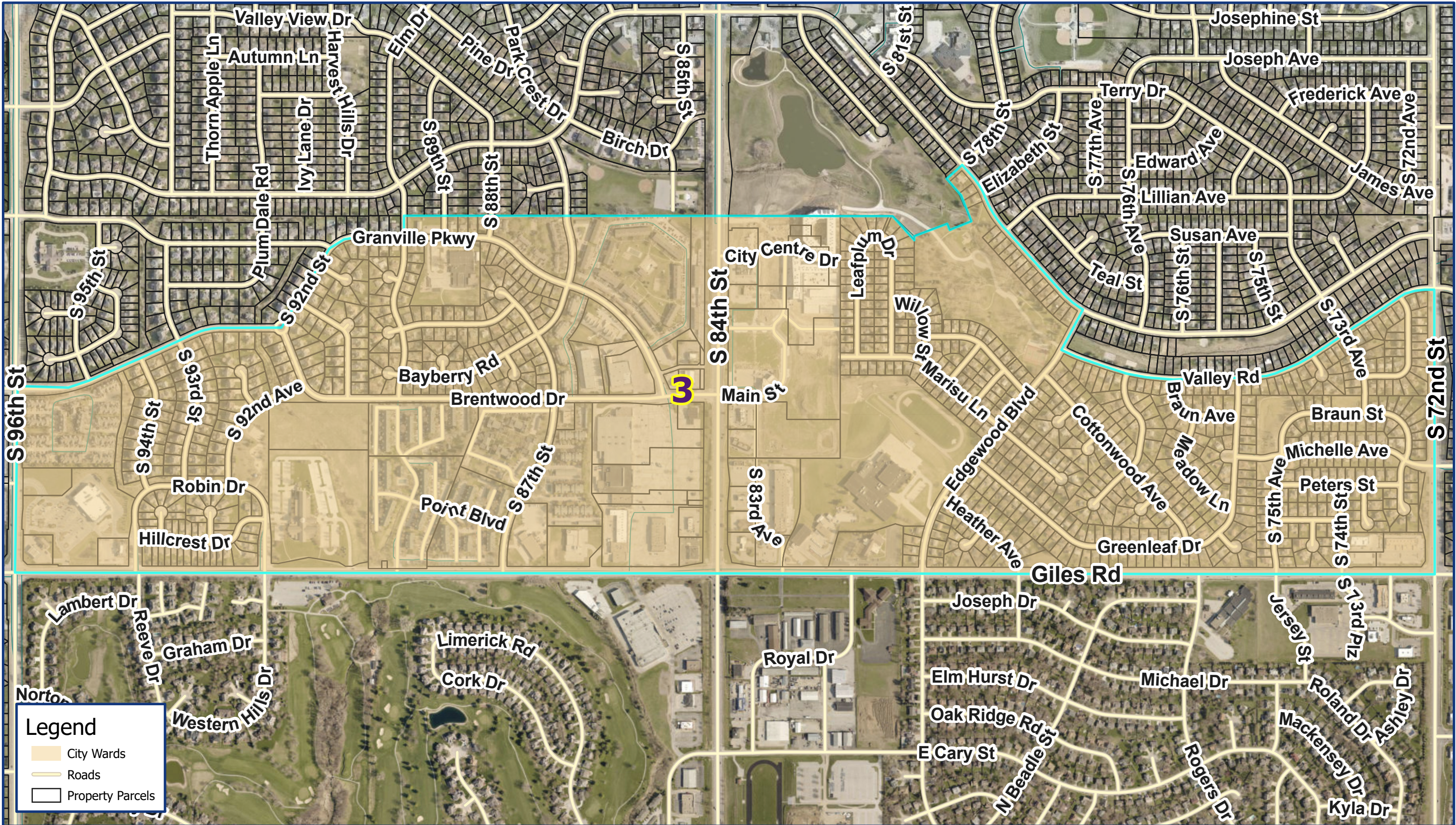




Option 2 - Ward #1



Option 2 - Ward #2



Option 2 - Ward #3

