

**CITY OF LA VISTA  
MAYOR AND CITY COUNCIL REPORT  
DECEMBER 16, 2025 AGENDA**

<b>Subject:</b>	<b>Type:</b>	<b>Submitted By:</b>
SNOW & ICE CONTROL PLAN	RESOLUTION ORDINANCE ◆ RECEIVE/FILE	JEFF CALENTINE DEPUTY DIRECTOR OF PUBLIC WORKS

**SYNOPSIS**

The La Vista Public Works Snow & Ice Control Plan formalizes and establishes an efficient and effective strategy for maintaining safe travel conditions during winter weather within the City of La Vista.

**FISCAL IMPACT**

N/A.

**RECOMMENDATION**

N/A.

**BACKGROUND**

La Vista Public Works' efforts to become accredited recently from the America Public Works Association allowed the department to identify strengths in our operational procedures but also allowed us to identify some areas for improvement. One area that was identified as an opportunity to further formalize our procedures was writing a new well-defined snow and ice control plan. This plan provides a transparent and consistent approach to plowing, salting, anti-icing and related operations. It ensures resources are allocated effectively while balancing public safety, budgetary constraints and environmental stewardship.

# La Vista Public Works Snow & Ice Control Plan Winter 2025/2026



# Table of Contents

1. Introduction/Background
2. Goals and Objectives
3. Authority and Responsibility
4. Levels of Service
5. Operational Procedures
  - Weather Monitoring
  - Snow Plowing
  - Salting, Anti-icing and Sanding
  - Sidewalk and Trail Clearing
  - Snow Emergency Declaration and Snow Removal
6. Equipment and Materials
7. Staffing and Shifts
8. Communications
9. Safety and Training
10. Environmental Considerations
11. Budget and Recordkeeping
12. Annual Review and Updates
  - **Attachment A** – Citywide Priority Map
  - **Attachment B** – Citywide Snow Removal District Map
  - **Attachment C** – City Centre Snow Removal Responsibility Map
  - **Attachment D** – Sample Weather Briefing from National Weather Service

# 1. Introduction/Background

The Snow and Ice Control Plan formalizes and establishes an efficient and effective strategy for maintaining safe travel conditions during winter weather within the City of La Vista. The Plan provides a transparent and consistent approach to plowing, salting, anti-icing and related operations. It ensures resources are allocated effectively while balancing public safety, budgetary constraints, and environmental stewardship.

## **Benefits of a Snow and Ice Control Plan include:**

- Transparent priorities and expectations for residents and decision makers.
- Efficient use of staff, equipment, and materials.
- Improved response times through defined snow routes and service levels.
- Enhanced public communication during storm events.
- Reduced liability by following consistent operational standards.

# 2. Goals and Objectives

## **The goals of this Plan are to:**

- Maintain reasonably safe and passable travel conditions during and after winter storms.
- Establish clear goal levels of service for snow and ice control.
- Protect public safety while minimizing economic and environmental impacts.
- Provide a structured and efficient approach to staffing, equipment deployment, and materials usage.
- Ensure compliance with applicable state and federal regulations.

# 3. Authority and Responsibility

- **City Council:** Approves snow and ice control policy and annual budget.
- **Public Works Director/Deputy Director:** Oversees implementation of the Plan and allocates resources.
- **Superintendents/Snow Bosses:** Direct field operations, manage staff assignments, and monitor progress.
- **Equipment Operators:** Execute snow plowing, sanding, and salting activities.
- **Contractors:** Supplement municipal resources when conditions exceed available capacity.

## 4. Levels of Service

Snow and ice control efforts will be prioritized to provide the greatest benefit to public safety and mobility. The City recognizes that during extreme weather events, conditions may temporarily exceed available resources which will not allow the desired level of service to be achieved.

### Priority System:

**1. Priority 1 Routes (Arterial/Major Collector/Emergency Routes):** Major streets, public safety facilities, and school zones. **The goal level of service for Priority 1 routes is wet pavement.**



Figure 1: Wet Pavement Conditions



**2. Priority 2 Routes (Minor Collector and Major Residential Streets):** Secondary through streets providing neighborhood access. **The goal level of service for Priority 2 routes is cleared wheel tracks.**



*Figure 2: Cleared Wheel Track Conditions*

**3. Priority 3 Routes (Minor Residential Streets/Cul-de-Sacs/School Zone Sidewalks) The goal level of service for Priority 3 routes are plowed with some snowpack.**



*Figure 3: Residential Road Plowed with Some Snowpack Conditions*

**4. Priority 4 Areas (Non-Essential Parking Lots/Sidewalks/Trails) The goal level of service for Priority 4 areas are plowed with some snowpack.**



*Figure 4: Parking Lot Plowed with Some Snowpack Conditions*

**When La Vista Public Works commences snow removal operations Priority Routes 1,2 and 3 will be completed during that operation utilizing overtime hours if necessary. Priority 4 areas service level will be completed during normal business hours (Monday-Friday 7:00a.m. – 3:30p.m.)**



## 5. Operational Procedures

### **Weather Monitoring**

The City monitors forecasts, radar, and field reports to anticipate and respond to winter weather events. Sarpy County Emergency Management sends out updates to active weather briefings from the National Weather Service to all Sarpy County agencies. The Snow Boss determines when operations are initiated.

### **Snow Plowing**

- Plowing generally begins after accumulation of 2 inches.
- Priority 1 routes are cleared first, followed by Priority 2, Priority 3 and Priority 4 routes.
- During active snow fall street centerlines will be cleared with a single pass in both directions of travel. When the storm has passed and there is no more accumulating snow, streets will be cleared to the curb lines. It is recommended that property owners not clear their driveway approaches until their streets have been plowed curb to curb to avoid doing it multiple times.
- Driveway openings may receive plowed snow; property owners are responsible for clearing access.

### **Salting, Anti-icing and Sanding**

- Salt is applied to priority routes, intersections, hills, and curves as needed.
- Application rates are adjusted based on pavement temperatures, storm severity, and environmental considerations.
- Anti-icing or pre-wetting may be used when conditions warrant.
- Sand is only utilized on an as needed basis during periods of extensive cold weather where salt is no longer effective (multiple days of pavement temps below 10 degrees Fahrenheit).

### **Sidewalk and Trail Clearing**

- The City clears sidewalks adjacent to municipal property.
- Property owners are responsible for clearing sidewalks adjacent to private property in accordance with City ordinance.

### **Snow Emergency Declaration and Snow Removal**

- The City may declare a Snow Emergency with temporary parking restrictions to allow for effective snow removal. Snow Emergency's are recommended by the Public Works Director to the Mayor in conjunction with the La Vista Police Department.
- In high-density areas, snow may be hauled to designated storage sites owned by the City.

## 6. Equipment and Materials

The City maintains equipment and material inventories adequate to support winter operations. Typical resources include:

### **Plow trucks**

- Arterials – Two Tandem Axle Trucks with Wing plows and Sanders
- District 1 – Single Axle Truck with Sander and Medium Duty Truck with Sander
- District 2 – Single Axle Truck with Sander and Medium Duty Truck with Sander
- District 3 – Single Axle Truck with Sander and Medium Duty Truck with Sander
- District 4 – Single Axle Truck with Wing and Sander and Medium Duty Truck with Sander
- District 5 – Single Axle Truck with Wing and Sander
- District 6 – Single Axle Truck with Wing and Sander Tandem Axle Truck with Wing and Sander

### **Salt stockpiles**

- 300-ton white salt storage in La Vista Public Works yard
- 100-ton ice slicer storage in La Vista Public Works yard
- 2000-ton white salt bulk storage in joint salt storage facility with the City of Papillion

### **Liquid Anti-Icing**

- Anti-Icing and Pre-Wet system brine are made in-house using white salt
- La Vista Public Works has 14,000 gallons in-house storage capacity
- Single Axle Truck with 900-gallon tank for anti-icing applications

## 7. Staffing and Shifts

- Standard operations are performed during normal business hours (Monday – Friday 7:00am-3:30pm.)
- For forecasted storms of 2 inches or greater outside of normal business hours, La Vista Public Works will staff and operate in 12-hour shifts (Noon to Midnight and Midnight to Noon) as dictated by the severity of the storm. 12-hour shift operations will continue until the level of service for priority routes 1,2, and 3 has been achieved to the best of our abilities.

## 8. Communications

Public notification methods may include:

- Esri/ArcGIS Winter Operations Center & Public Facing Plow Tracking Website
- City website and social media updates
- Local radio, TV, and news outlets

All resident inquiries regarding snow and ice operations are directed to the City's website [www.cityoflavista.org/1226/Snow-Headquarters](http://www.cityoflavista.org/1226/Snow-Headquarters) or the La Vista Public Works main telephone line (402)-331-8927 during normal business hours. Additionally, during non-business hours residents can contact Sarpy County Dispatch at (402)-593-2310 to report a complaint or concern.

## 9. Safety and Training

- Operators receive training in defensive driving, equipment operation, and personal protective equipment (PPE) use.
- Safety protocols are followed in accordance with municipal and occupational safety regulations.
- Fatigue management practices are implemented during prolonged snow events.

## 10. Environmental Considerations

The City is committed to reducing environmental impacts from snow and ice operations by:

- Applying salt at the minimum effective rate based on forecasted conditions.
- Annual Calibration of all salt application equipment
- Identifying snow storage sites that minimize contamination of local waterways.
- Evaluating alternative materials and methods (e.g., brine, beet juice additives) as feasible.

## 11. Budget and Recordkeeping

Annual budget allocations for snow and ice control are approved by the City Council as part of the biennial budget approval process. Records will be maintained on:

- Weather events and response activities
- Quantities of materials used
- Staffing hours and overtime
- Equipment usage and maintenance
- Public inquiries and complaints

## 12. Annual Review and Updates

This Plan will be reviewed annually by the Public Works Department to assess effectiveness, incorporate new technologies, and ensure compliance with best practices. Updates and recommended changes will be submitted to the City Council for approval.

## Attachments

**Attachment A** – Citywide Priority Route Map

- Provides a visual representation of Priority 1, 2, and 3 streets throughout La Vista.

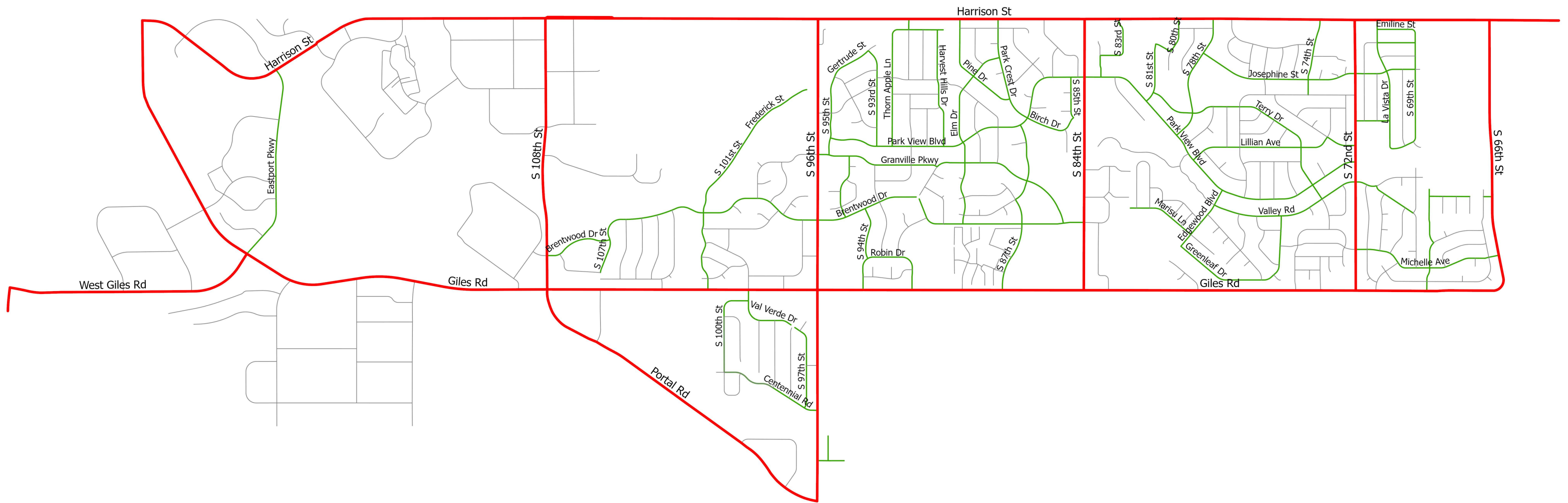
**Attachment B** – Citywide Snow Removal District Map

**Attachment C** – City Centre Snow Removal Responsibility Map

**Attachment D** – Sample Weather Briefing from National Weather Service



# **Attachment A**



## Legend

- Service Level 1
- Service Level 2
- Service Levels 3 & 4



# City of La Vista Official Snow Plan Level of Service Map



## **Attachment B**

# Districts Snow Map

Date December 30,2015

District 6 = 28 Lane Miles  
2 Trucks (14 Lane Miles/Truck)

District 3 = 25 Lane Miles  
2 Trucks (12.5 Lane Miles/Truck)

District 5 = 15 Lane Miles  
2 Trucks (7.5 Lane Miles/ Truck)

District 2 = 27 Lane Miles  
2 Trucks (13.5 Lane Miles/Truck)

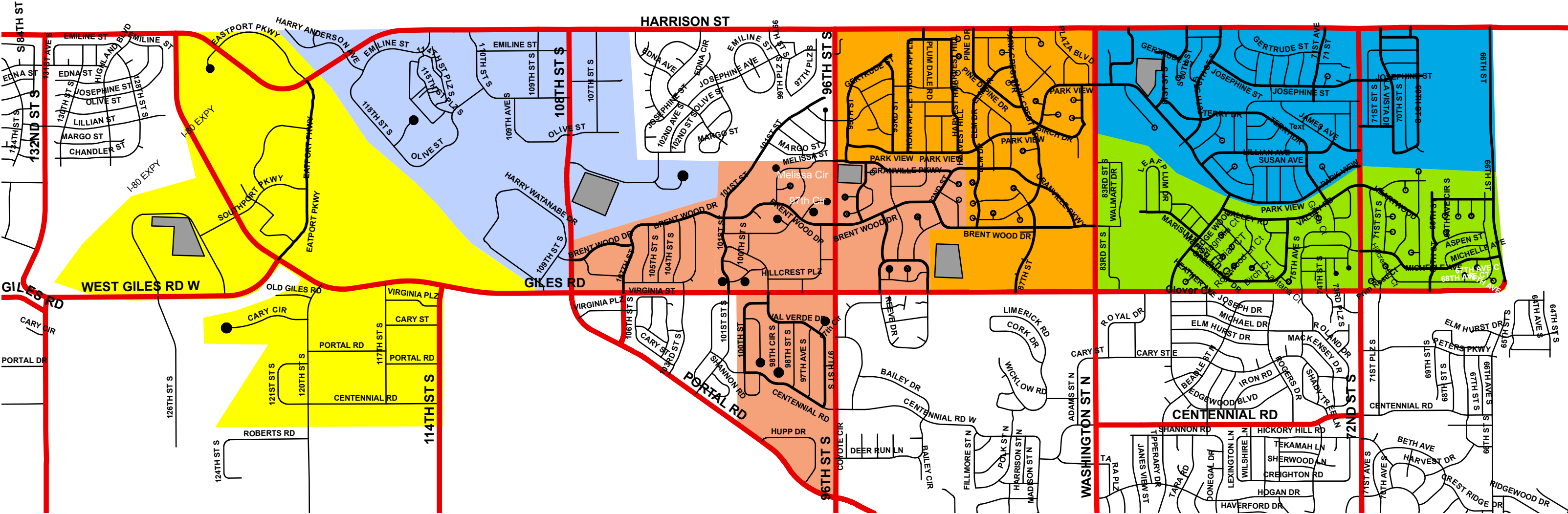
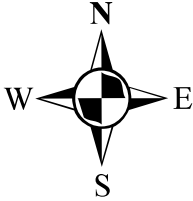
District 4 = 29 Lane Miles  
2 Trucks (14.5 Lane Miles/Truck)

District 1 = 28 Lane Miles  
2 Trucks (14 Lane Miles/Truck)

Mains 58 Lane Miles  
2 Truck (29 Lane Mile/Truck)

## Legend

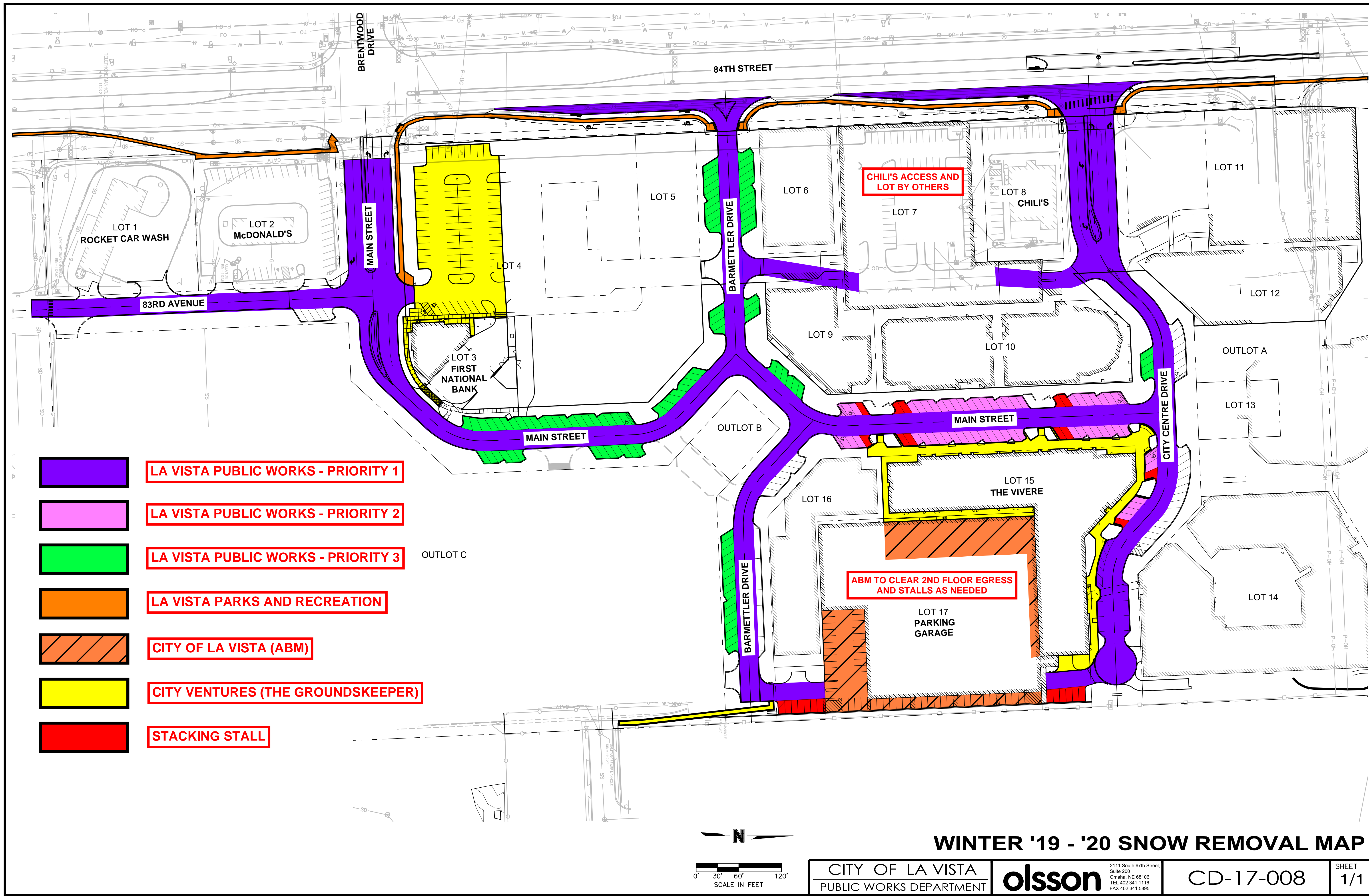
- Mains
- Minor Road
- Primary Streets
- Cul-de-Sacs





## **Attachment C**

DWG: F:\2016\0501-1000\016-0546\40-Design\AutoCAD\Exhibits\19-10-22\_WINTER '19-'20 SNOW REMOVAL MAP.dwg USER: zturek  
DATE: October 22, 2019



## **Attachment D**





# Hazardous Travel Today

November 29, 2025  
4:17 AM CST

## Key Messages

- Snow falling onto a glaze of ice will lead to hazardous travel.
- Travel will become increasingly difficult for those heading east or north.

## Travel Impacts

- ☐ Slippery Roads
- ☐ Reduced Visibility
- ☐ Some blowing and drifting snow on Saturday

NEW

## Important Updates

Updated snow amounts for today into the evening.

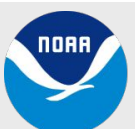
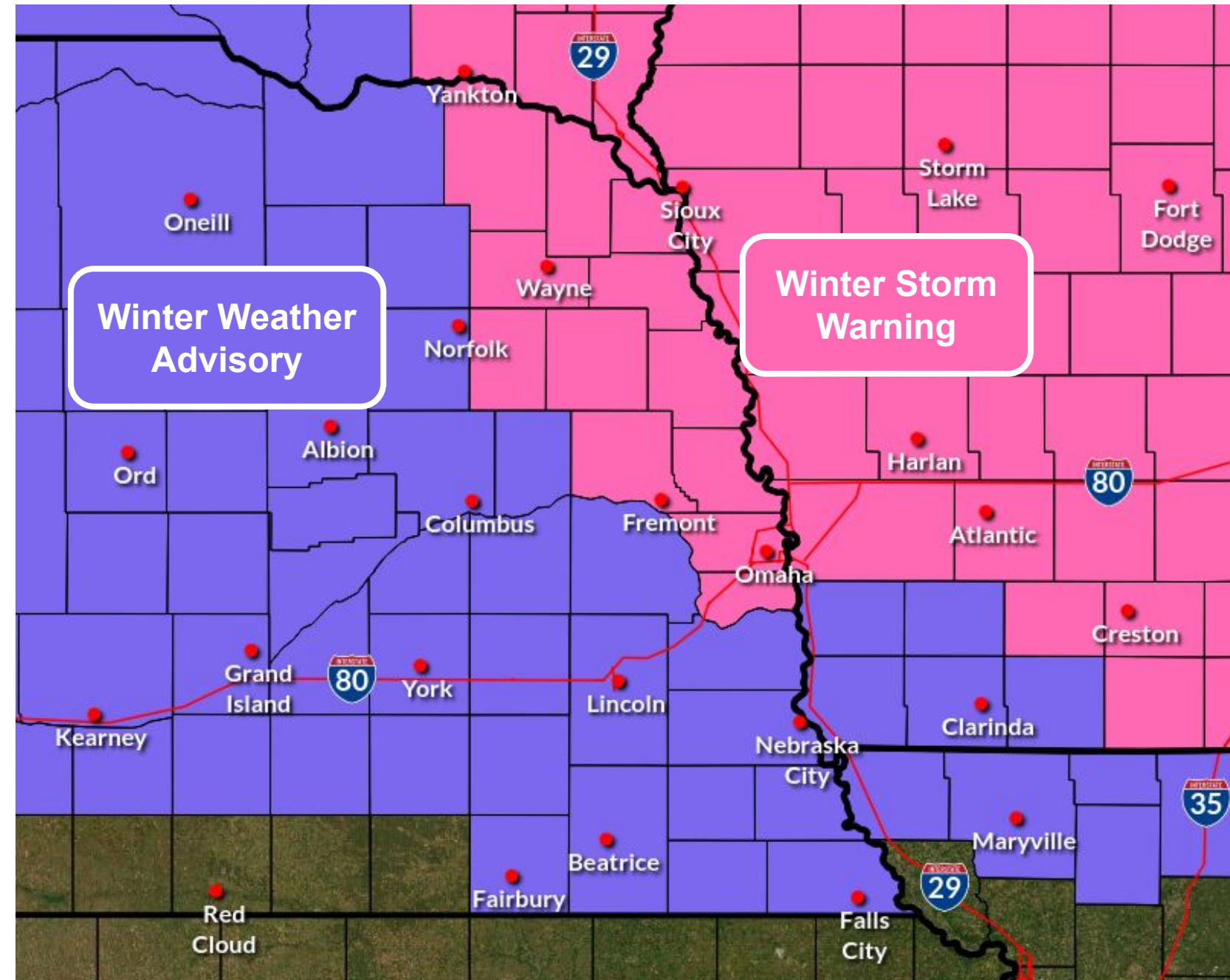
### Forecast Confidence in Snow Amounts



Low

Medium

High



National Oceanic and  
Atmospheric Administration  
U.S. Department of Commerce

National Weather Service  
Omaha/Valley, NE





# Expected Snowfall

November 29, 2025  
4:17 AM CST

## Key Messages

- The heaviest snowfall amounts will be focused north and east
- Exact temperature will be key to snow vs. rain on the southern edge of the storm
- Increasing winds this afternoon will cause some blowing/drifting of snow

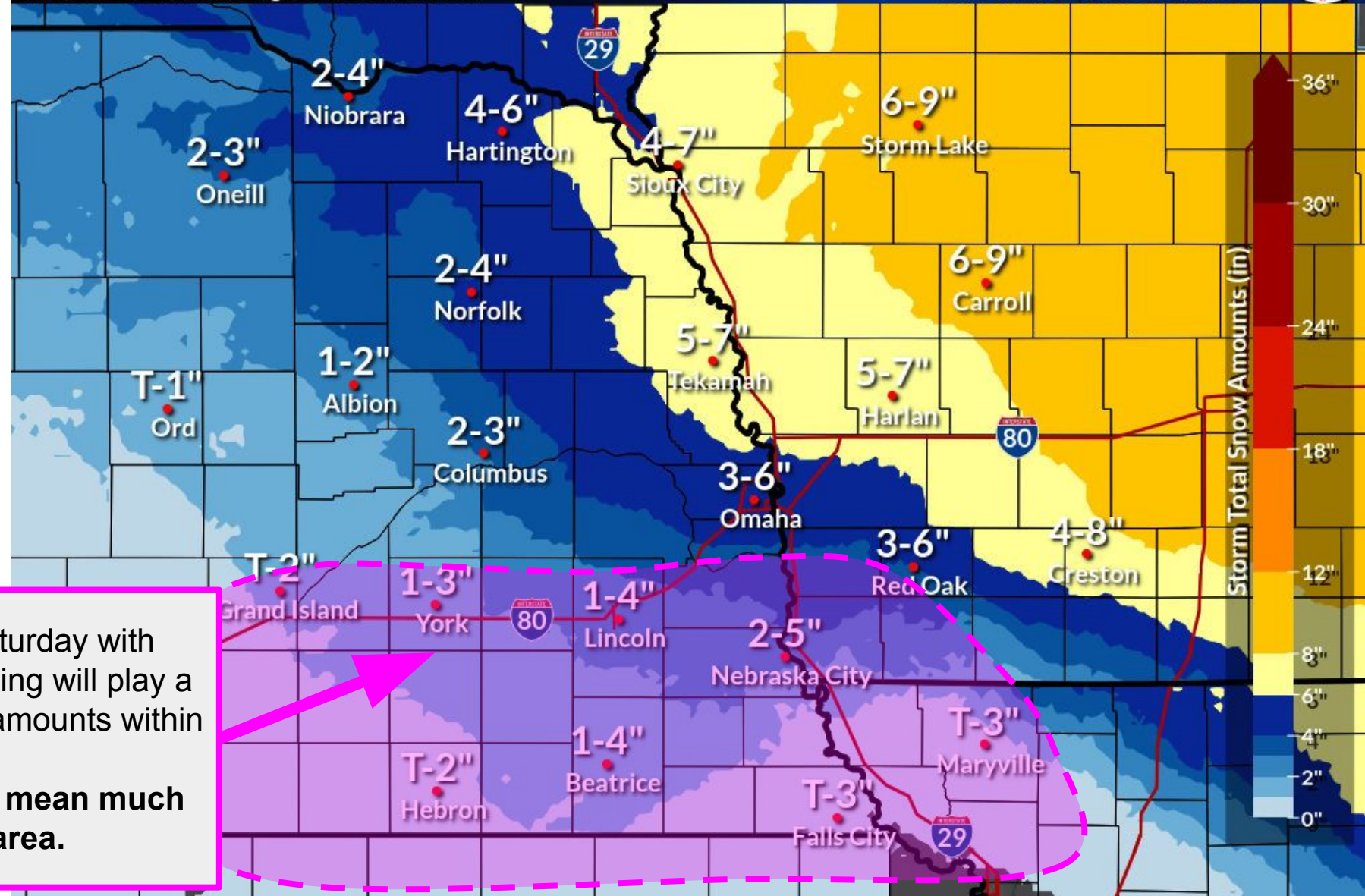
★ Rain/Snow mix early Saturday with temperatures near freezing will play a huge role in total snow amounts within the pink shaded area.  
**Just a degree warmer will mean much less snow in this area.**

## Expected Snowfall - Official NWS Forecast

Valid Sat 1:00AM through Sun 6:00AM CST

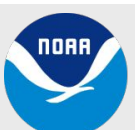
Weather Forecast Office  
Omaha/Valley, NE

Issued Nov 29, 2025 3:03 AM CST



NWSOmaha

weather.gov/omaha



National Oceanic and  
Atmospheric Administration  
U.S. Department of Commerce

National Weather Service  
Omaha/Valley, NE

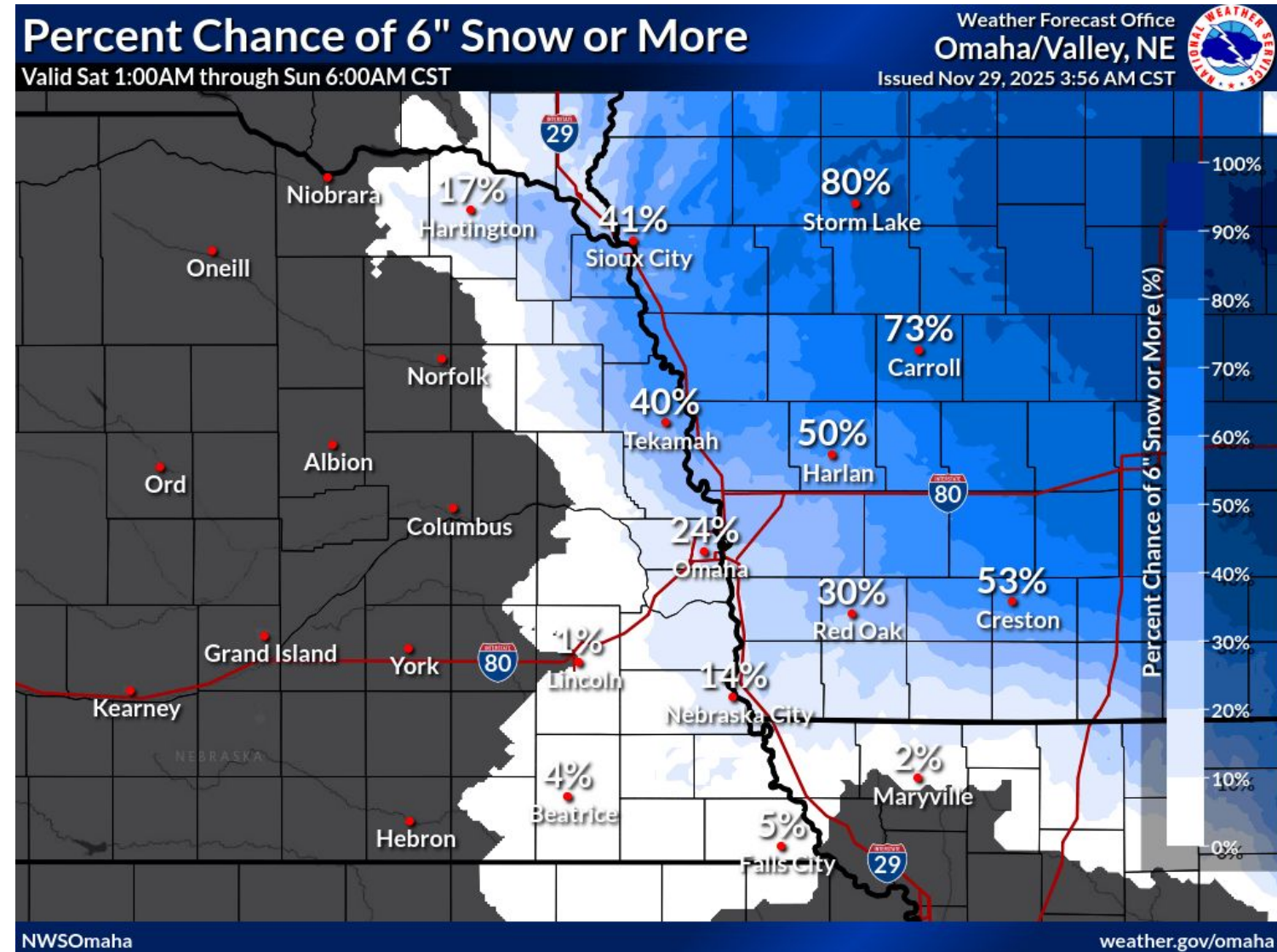
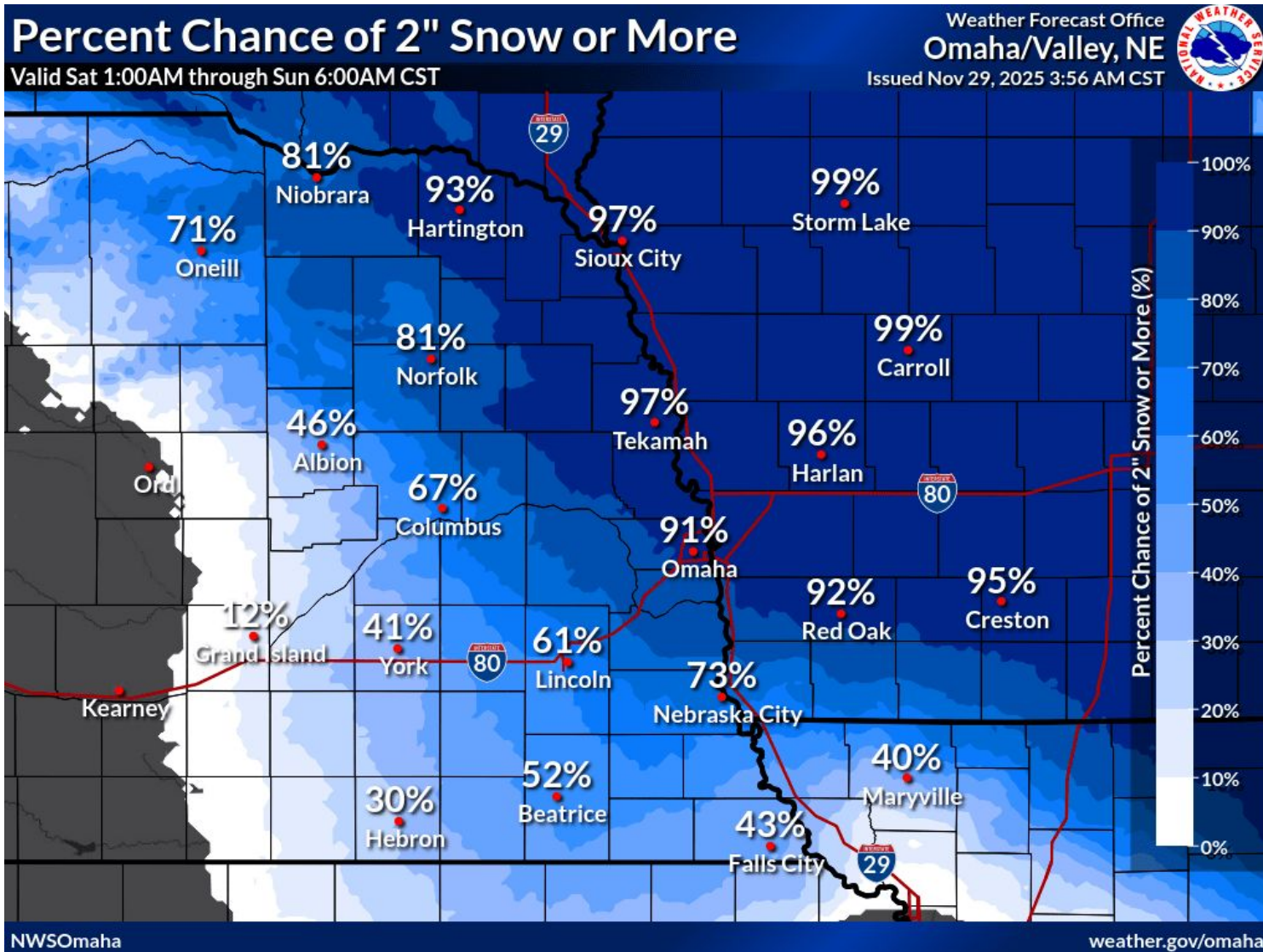




# Expected Snowfall

November 29, 2025  
4:17 AM CST

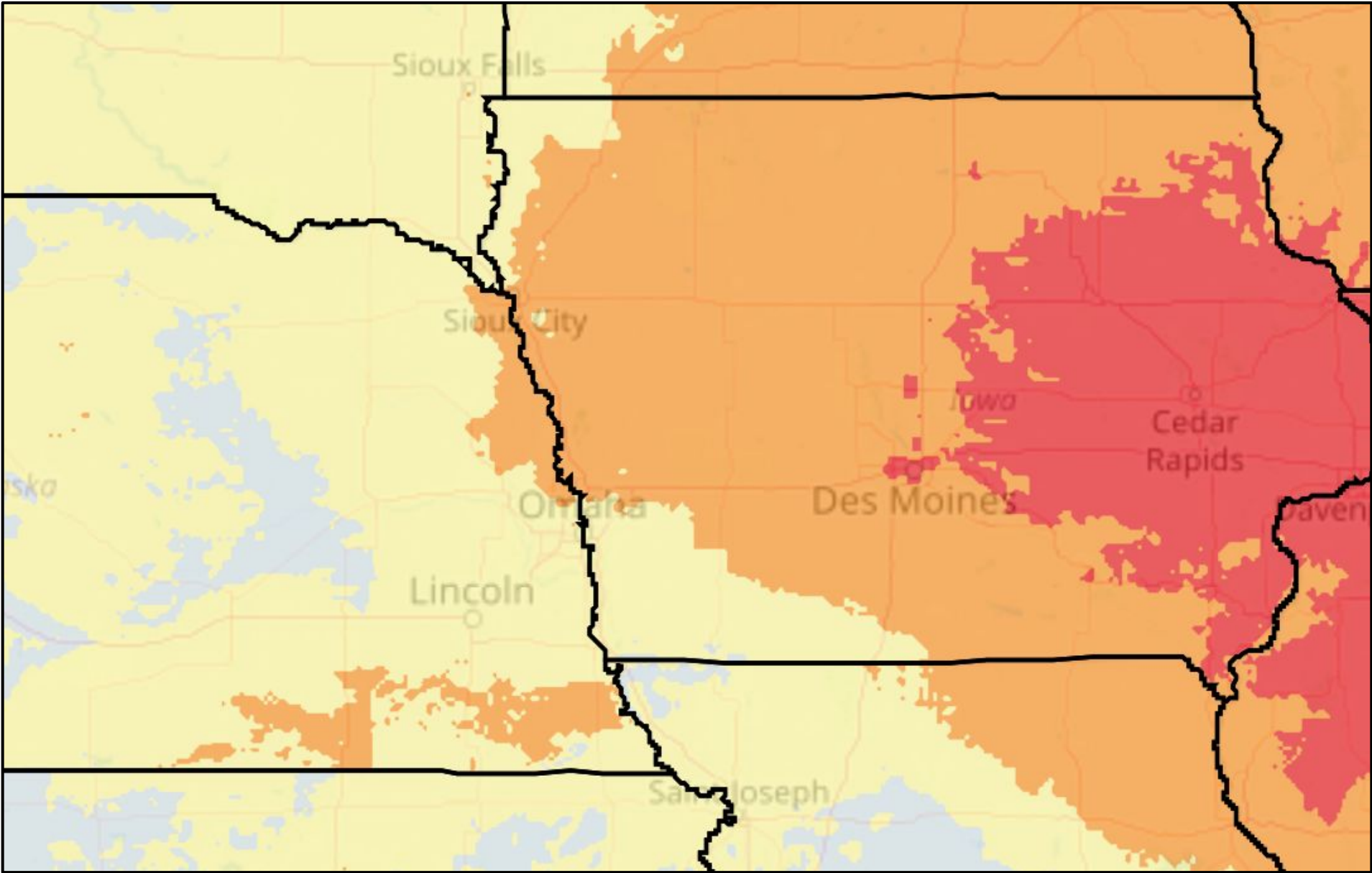
## Likelihood of Additional Snowfall Amounts Today







## Potential for Hazardous Travel Due To Winter Weather



Potential Winter Storm Impacts	
	<b>Winter Weather Area</b> Expect Winter Weather. <ul style="list-style-type: none"><li>• Winter driving conditions. <b>Drive carefully.</b></li></ul>
	<b>Minor Impacts</b> Expect a few inconveniences to daily life. <ul style="list-style-type: none"><li>• Winter driving conditions. <b>Use caution while driving.</b></li></ul>
	<b>Moderate Impacts</b> Expect disruptions to daily life. <ul style="list-style-type: none"><li>• Hazardous driving conditions. <b>Use extra caution while driving.</b></li><li>• Closures and disruptions to infrastructure may occur.</li></ul>
	<b>Major Impacts</b> Expect considerable disruptions to daily life. <ul style="list-style-type: none"><li>• Dangerous or impossible driving conditions. <b>Avoid travel if possible.</b></li><li>• Widespread closures and disruptions to infrastructure may occur.</li></ul>
	<b>Extreme Impacts</b> Expect substantial disruptions to daily life. <ul style="list-style-type: none"><li>• Extremely dangerous or impossible driving conditions. <b>Travel is not advised.</b></li><li>• Extensive and widespread closures and disruptions to infrastructure may occur.</li><li>• Life-saving actions may be needed.</li></ul>





# Precipitation Type and Timing

November 29, 2025  
4:17 AM CST

## Precipitation Details

- Areas north will remain cold enough to keep precipitation falling as snow.
- Locations along and south of Interstate 80 will see wintry mix before ending as snow.
- Cold temperatures will work to refreeze wet surfaces overnight.

	Sat							Sun	
	3am	6am	9am	12pm	3pm	6pm	9pm	12am	3am
Albion	85%	85%	80%	40%	15%	0%	0%	0%	0%
Beatrice	90%	95%	90%	35%	10%	0%	0%	0%	0%
Bloomfield	85%	90%	90%	80%	65%	5%	5%	0%	0%
Clarinda	95%	100%	100%	85%	45%	15%	10%	0%	0%
Columbus	90%	90%	85%	55%	15%	0%	0%	0%	0%
Fairbury	90%	90%	85%	15%	10%	0%	0%	0%	0%
Falls City	95%	100%	95%	70%	20%	0%	0%	0%	0%
Fremont	100%	100%	95%	75%	40%	5%	5%	0%	0%
Harlan	100%	100%	100%	95%	75%	25%	20%	0%	0%
Hartington	85%	90%	90%	85%	70%	5%	5%	0%	0%
Lincoln	95%	100%	90%	55%	15%	0%	0%	0%	0%
Nebraska City	95%	100%	95%	75%	30%	5%	5%	0%	0%
Neligh	85%	90%	85%	60%	40%	0%	0%	0%	0%
Norfolk	90%	95%	90%	75%	35%	5%	5%	0%	0%
Omaha	100%	100%	95%	85%	50%	10%	10%	0%	0%
Onawa	95%	100%	95%	95%	75%	20%	15%	0%	0%
Red Oak	100%	100%	100%	90%	55%	15%	15%	0%	0%
Seward	95%	95%	90%	45%	10%	0%	0%	0%	0%
Tekamah	100%	100%	95%	90%	60%	15%	10%	0%	0%
Wayne	90%	95%	90%	85%	60%	5%	5%	0%	0%
West Point	95%	100%	90%	80%	50%	10%	10%	0%	0%

Created: 3 am CST Sat 11/29/2025. Shows most impactful weather for the period beginning at the time shown. Weather symbols display where Probability of Precipitation ≥ 0%.

- Rain +

- Fz Rain +

- Wintry Mix +

- Snow +







# Winds Complicate Travel

November 29, 2025  
4:17 AM

Strongest Winds During & After the Heaviest Snow



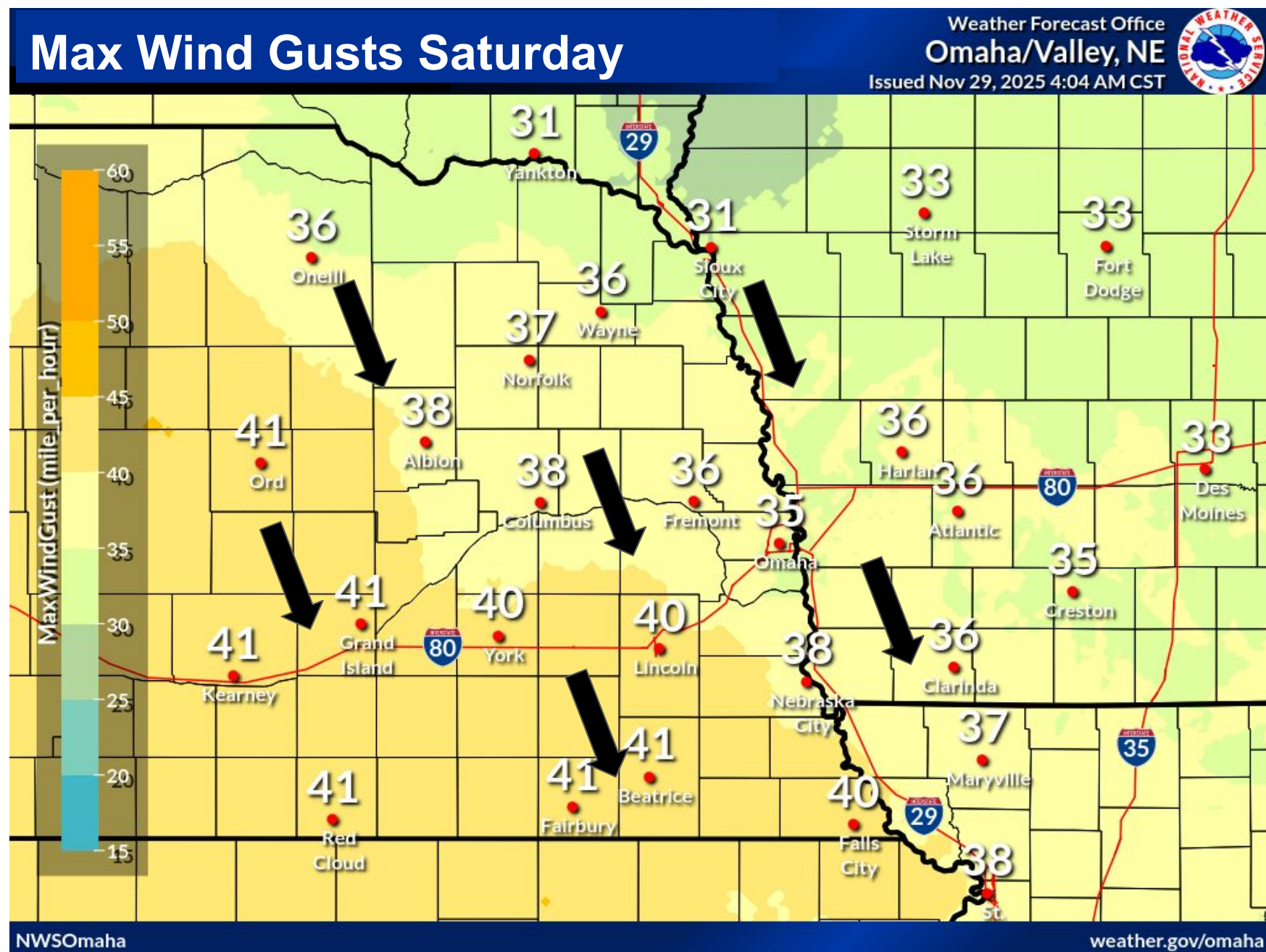
## What to Expect:

- Winds out of the northwest will increase, gusting to 35 mph.
- Strongest in the afternoon
- Tonight: 20-35 mph gusts
- Sunday: Decreasing to less than 15 mph by noon, nearly calm by sunset.

## Impacts:



- Reduced visibility
- Bitter Cold
- Blowing and Drifting Snow
- Difficult Travel







# Much Colder Weather on the Way

November 29, 2025  
4:17 AM

## Temps Hit Bottom on Sunday-Monday

	Sat			Sun				Mon				Tue			
	6am	12pm	6pm	12am	6am	12pm	6pm	12am	6am	12pm	6pm	12am	6am	12pm	6pm
Albion	9	3	-1	-3	-2	10	11	6	6	12	8	9	8	20	19
Beatrice	16	7	0	-1	0	11	12	9	10	15	8	2	2	22	16
Bloomfield	7	1	-6	-7	-8	2	-1	-1	0	8	0	-2	-2	15	14
Clarinda	22	11	4	-1	-2	9	11	10	12	13	17	10	10	15	15
Columbus	11	6	-2	-4	-4	7	11	4	5	10	3	-2	-2	18	14
Fairbury	16	9	0	-1	0	12	13	10	10	16	16	11	10	24	18
Falls City	25	14	4	1	2	12	15	17	13	16	18	8	7	20	18
Fremont	15	9	-3	-3	-5	8	10	11	8	11	6	-1	5	13	13
Harlan	15	9	0	-6	-6	4	7	7	7	8	8	6	6	9	10
Hartington	9	2	-5	-7	-8	2	0	-1	1	8	1	-3	-2	14	14
Lincoln	14	9	1	0	0	9	13	13	11	15	8	2	1	18	18
Nebraska City	21	11	3	-1	-1	7	12	9	9	13	10	3	2	17	17
Neligh	7	2	-3	-3	-3	6	4	1	2	9	5	2	2	19	17
Norfolk	10	5	-2	-4	-5	6	9	4	4	10	4	2	7	17	17
Omaha	17	11	1	0	0	8	12	12	9	13	9	2	1	15	16
Onawa	15	9	0	-4	-5	6	8	4	4	9	4	-2	3	10	10
Red Oak	19	10	3	-1	-3	9	9	10	8	11	9	2	2	12	12
Seward	11	6	-3	-3	-5	7	6	4	6	11	3	-2	-2	15	14
Tekamah	12	6	-3	-5	-5	6	8	8	6	9	4	-1	4	10	11
Wayne	10	3	-5	-8	-7	5	7	1	1	9	3	-2	-1	14	14
West Point	8	4	-4	-5	-6	4	9	4	4	6	3	-3	-2	11	12

## Chilly Details

- Colder air moves into the region this weekend.
- Wind chills at or below zero by Sunday morning.
- Wind chills coldest Sunday and Monday mornings.







## Points to Remember

- Focus on the potential. Winter forecasts can change and the axis of heaviest snow can shift.
- Stay informed. Please reach out to us with additional questions.

## Additional Resources

- [NWS Omaha Web Page](#)
- [NWS Omaha Winter Page](#)
- [Winter Storm Severity Index](#)
- [Winter Weather Safety](#)
- [Reporting Winter Weather](#)
- [Recent Snowfall Reports](#)
- [NE 511](#) | [IA 511](#)

Social Media: [Facebook](#) | [X](#)

**first snow**

*The first snow of the year can often cause major problems on the road as people adjust to the poor driving conditions.*

**safety tips**

- Slow down
- Don't use cruise control
- Leave plenty of distance between you and other vehicles

**“Sneaky” Winter Hazards**

The winter season brings many weather events that can “sneak” up on you. These are weather hazards that cause big impacts and make travel difficult without making big news.

weather.gov