

**CITY OF LA VISTA
MAYOR AND CITY COUNCIL REPORT
AUGUST 4, 2009 AGENDA**

Subject:	Type:	Submitted By:
RECOMMENDATION: GILES ROAD CONTROLLED ACCESS BREAK	◆ RESOLUTION ORDINANCE RECEIVE/FILE	JOE SOUCIE PUBLIC WORKS DIRECTOR

SYNOPSIS

A resolution has been prepared recommending approval of a request made by E&A Consulting Group, Inc., for additional access of Southport Commons from Giles Road which is a controlled access corridor managed by the Nebraska Department of Roads (NDOR).

FISCAL IMPACT

N/A

RECOMMENDATION

Approval

BACKGROUND

Currently, Giles Road has controlled access and any new connection points require an access permit from the Nebraska Department of Roads (NDOR). NDOR requires a resolution of recommendation from the City of La Vista.

The developer considers the lack of access at this point a detriment to the proposed use of the property as a commercial area with a large multi-screen theater. With only a single access to Westport Parkway, there are concerns that considerable traffic congestion during the peak operation hours of the theater with only an access to Westport Parkway will create safety hazards for motorists and pedestrians in the parking areas adjacent to the theater.

The proposal has been reviewed by the City Engineer and Public Works Director and approval is recommended. An exhibit of the proposed location has been included.

RESOLUTION NO. _____

A RESOLUTION OF THE MAYOR AND CITY COUNCIL OF THE CITY OF LA VISTA, NEBRASKA RECOMMENDING TO THE NEBRASKA DEPARTMENT OF ROADS (NDOR) APPROVAL OF A REQUEST BY E & A CONSULTING GROUP INC. FOR ADDITIONAL ACCESS OF SOUTHPORT COMMONS FROM GILES ROAD.

WHEREAS, the City Council of the City of La Vista has determined that the additional access of Southport Commons from Giles Road is necessary; and

WHEREAS, E & A Consulting Group, Inc is requesting an additional access point due to single access to Westport Parkway from a commercial area with a large multi-screen theater; and

WHEREAS, there are concerns that traffic congestion during the peak operation hours of the theater with only an access to Westport Parkway will create safety hazards for motorists and pedestrians in the parking areas adjacent to the theatre; and

WHEREAS, the Nebraska Department of Roads requires a resolution of recommendation from the City of La Vista in order to consider this request; and

WHEREAS, the proposal has been reviewed by the City Engineer and Public Works Director and approval is recommended.

NOW, THEREFORE BE IT RESOLVED, by the Mayor and City Council of La Vista, Nebraska, recommending to the Nebraska Department of Roads (NDOR) approval of a request by E & A Consulting Group Inc. for additional access of Southport Commons from Giles Road.

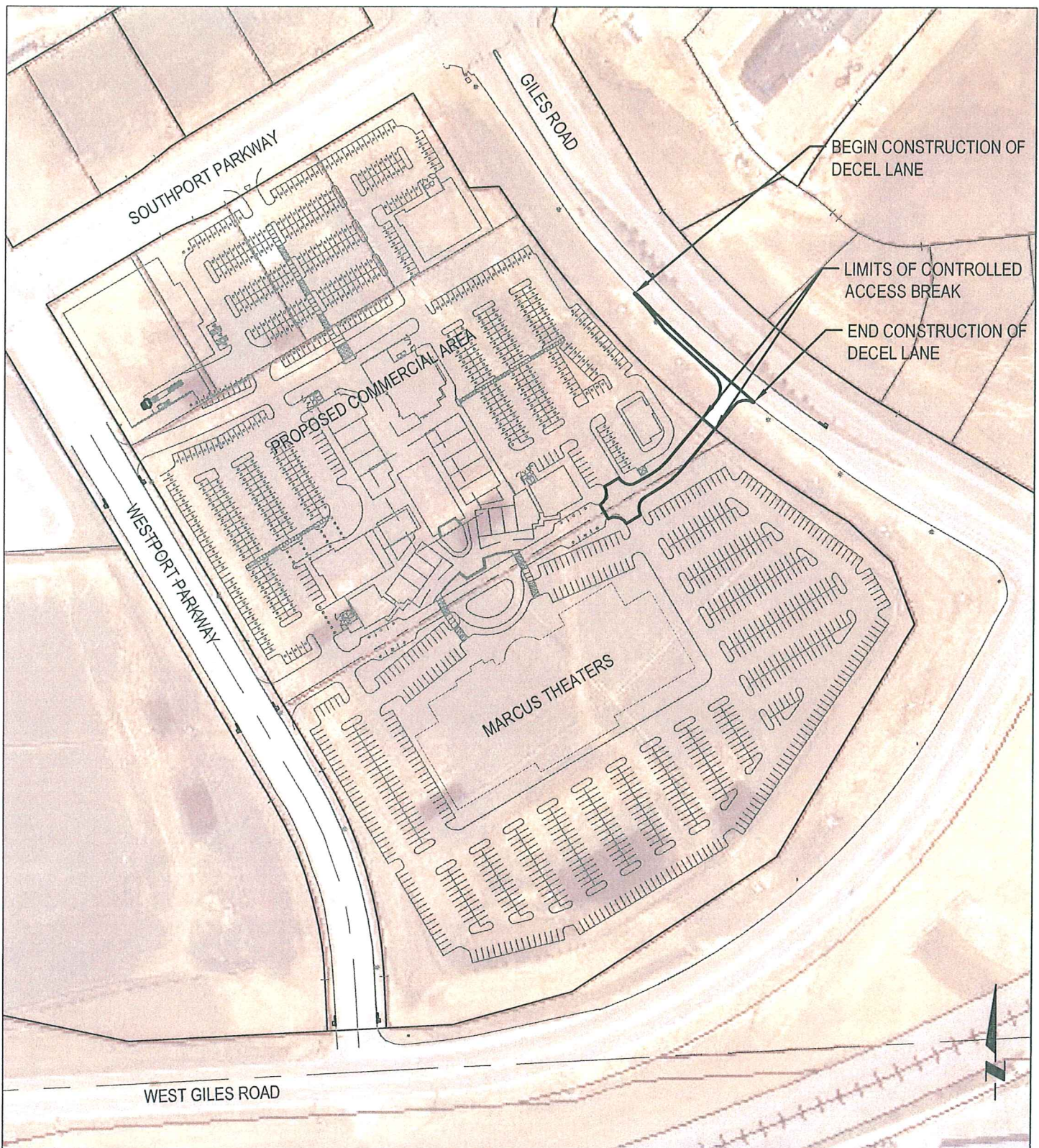
PASSED AND APPROVED THIS 4TH DAY OF AUGUST 2009

CITY OF LA VISTA

Douglas Kindig, Mayor

ATTEST:

Pamela A. Buethe, CMC
City Clerk



E&A CONSULTING GROUP, INC.
 ENGINEERING • PLANNING • FIELD SERVICES
 330 NORTH 117TH STREET OMAHA, NE 68154 PHONE: (402) 895-4700

EXHIBIT - ACCESS LOCATION

Drawn by: MBS Chkd by: _____ Date: _____ Chkd by: _____ Date: _____

Proj No.: 2000.030.082 Date: 06/11/2009 Scale: 1" = 200'

SOUTHPORT COMMONS

LA VISTA, NEBRASKA