

**CITY OF LA VISTA
MAYOR AND CITY COUNCIL REPORT
JUNE 21, 2011 AGENDA**

Subject:	Type:	Submitted By:
GILES CORNER SUBDIVISION NO PARKING ZONE DESIGNATIONS	◆ RESOLUTION ORDINANCE RECEIVE/FILE	JOHN KOTTMANN CITY ENGINEER/ASSISTANT PUBLIC WORKS DIRECTOR

SYNOPSIS

A resolution has been prepared establishing "No Parking Zones" on various sides of the streets within the Giles Corner subdivision as recommended by the city engineer and authorizing the Public Works Department to install appropriate signs.

FISCAL IMPACT

The FY 10/11 General Fund budget provides funding for the proposed purchase.

RECOMMENDATION

Approval

BACKGROUND

In response to concerns expressed by residents of the Giles Corner subdivision and in accordance with providing for the safe passage of vehicles and pedestrians on the streets within Giles Corner the designation of No Parking Zones is recommended in the following locations:

1. A No Parking Zone on the west side of South 73rd Avenue from the north line of Outlot "C" in Giles Corner to the centerline of Braun Street.
2. A No Parking Zone on the south side of Braun Street from the centerline of Michelle Avenue to the east line of Lot 63, Giles Corner.
3. A No Parking Zone on the west side of South 72nd Avenue from the east line of Lot 63, Giles Corner to the centerline of Peters Street.
4. A No Parking Zone on the south side of Michelle Avenue from the centerline of 72nd Street to the west line of Outlot "E" in Giles Corner.
5. A No Parking Zone on the north side of Michelle Avenue from the centerline of Braun Street to the west line of Outlot "D" in Giles Corner.
6. A No Parking Zone on the north side of Michelle Avenue from the centerline of 72nd Street to the centerline of South 72nd Avenue.
7. A No Parking Zone on the east side of South 75th Avenue from the centerline of Giles Road to the centerline of Michelle Avenue.
8. A No Parking Zone on the west side of South 75th Avenue from the centerline of Giles Road to the north line of Lot 2, Giles Corner.
9. A No Parking Zone on the south side of Peters Street from the centerline of South 75th Avenue to the centerline of South 72nd Avenue.

10. A No Parking Zone on the south side of Meadow Lane from the centerline of South 75th Avenue to the centerline of South 74th Street.
11. A No Parking Zone on the east side of South 74th Street from the centerline of Giles Road to the centerline of Peters Street.
12. A No Parking Zone of the west side of South 74th Street from the centerline of Giles Road to the north line of Lot 21, Giles Corner.
13. A No Parking Zone of a portion of the South 74th Avenue Circle cul-de-sac from the south line of Lot 16 around the cul-de-sac to the south line of Lot 22.
14. A No Parking Zone of a portion of the South 73rd Avenue Circle cul-de-sac from the south line of Lot 83 around the cul-de-sac to the north line of Lot 87.
15. A No Parking Zone of a portion of the South 72rd Avenue Circle cul-de-sac from the south line of Lot 91 around the cul-de-sac to the north line of Lot 94.

Attached is a map illustrating the proposed No Parking Zones.

RESOLUTION NO. _____

A RESOLUTION OF THE MAYOR AND CITY COUNCIL OF THE CITY OF LA VISTA, NEBRASKA ESTABLISHING A NO PARKING ZONE VARIOUS SIDES OF THE STREETS WITHIN THE GILES CORNER SUBDIVISION AS RECOMMENDED

WHEREAS, the Mayor and City Council have determined that "No Parking Zones" on various sides of the streets within the Giles Corner subdivision is necessary for safe passage of vehicles and pedestrians on the streets; and

WHEREAS, City Engineer has reviewed the plan and recommends approval,

NOW, THEREFORE, BE IT RESOLVED, that the "No Parking Zone" on the following locations is approved:

1. A No Parking Zone on the west side of South 73rd Avenue from the north line of Outlot "C" in Giles Corner to the centerline of Braun Street.
2. A No Parking Zone on the south side of Braun Street from the centerline of Michelle Avenue to the east line of Lot 63, Giles Corner.
3. A No Parking Zone on the west side of South 72nd Avenue from the east line of Lot 63, Giles Corner to the centerline of Peters Street.
4. A No Parking Zone on the south side of Michelle Avenue from the centerline of 72nd Street to the west line of Outlot "E" in Giles Corner.
5. A No Parking Zone on the north side of Michelle Avenue from the centerline of Braun Street to the west line of Outlot "D" in Giles Corner.
6. A No Parking Zone on the north side of Michelle Avenue from the centerline of 72nd Street to the centerline of South 72nd Avenue.
7. A No Parking Zone on the east side of South 75th Avenue from the centerline of Giles Road to the centerline of Michelle Avenue.
8. A No Parking Zone on the west side of South 75th Avenue from the centerline of Giles Road to the north line of Lot 2, Giles Corner.
9. A No Parking Zone on the south side of Peters Street from the centerline of South 75th Avenue to the centerline of South 72nd Avenue.
10. A No Parking Zone on the south side of Meadow Lane from the centerline of South 75th Avenue to the centerline of South 74th Street.
11. A No Parking Zone on the east side of South 74th Street from the centerline of Giles Road to the centerline of Peters Street.
12. A No Parking Zone of the west side of South 74th Street from the centerline of Giles Road to the north line of Lot 21, Giles Corner.
13. A No Parking Zone of a portion of the South 74th Avenue Circle cul-de-sac from the south line of Lot 16 around the cul-de-sac to the south line of Lot 22.
14. A No Parking Zone of a portion of the South 73rd Avenue Circle cul-de-sac from the south line of Lot 83 around the cul-de-sac to the north line of Lot 87.

15. A No Parking Zone of a portion of the South 72nd Avenue Circle cul-de-sac
from the south line of Lot 91 around the cul-de-sac to the north line of Lot 94.

BE IT FURTHER RESOLVED, that the Public Works Department be, and hereby is, authorized to
install the appropriate signage designating these "No Parking Zones".

PASSED AND APPROVED THIS 21ST DAY OF JUNE, 2011.

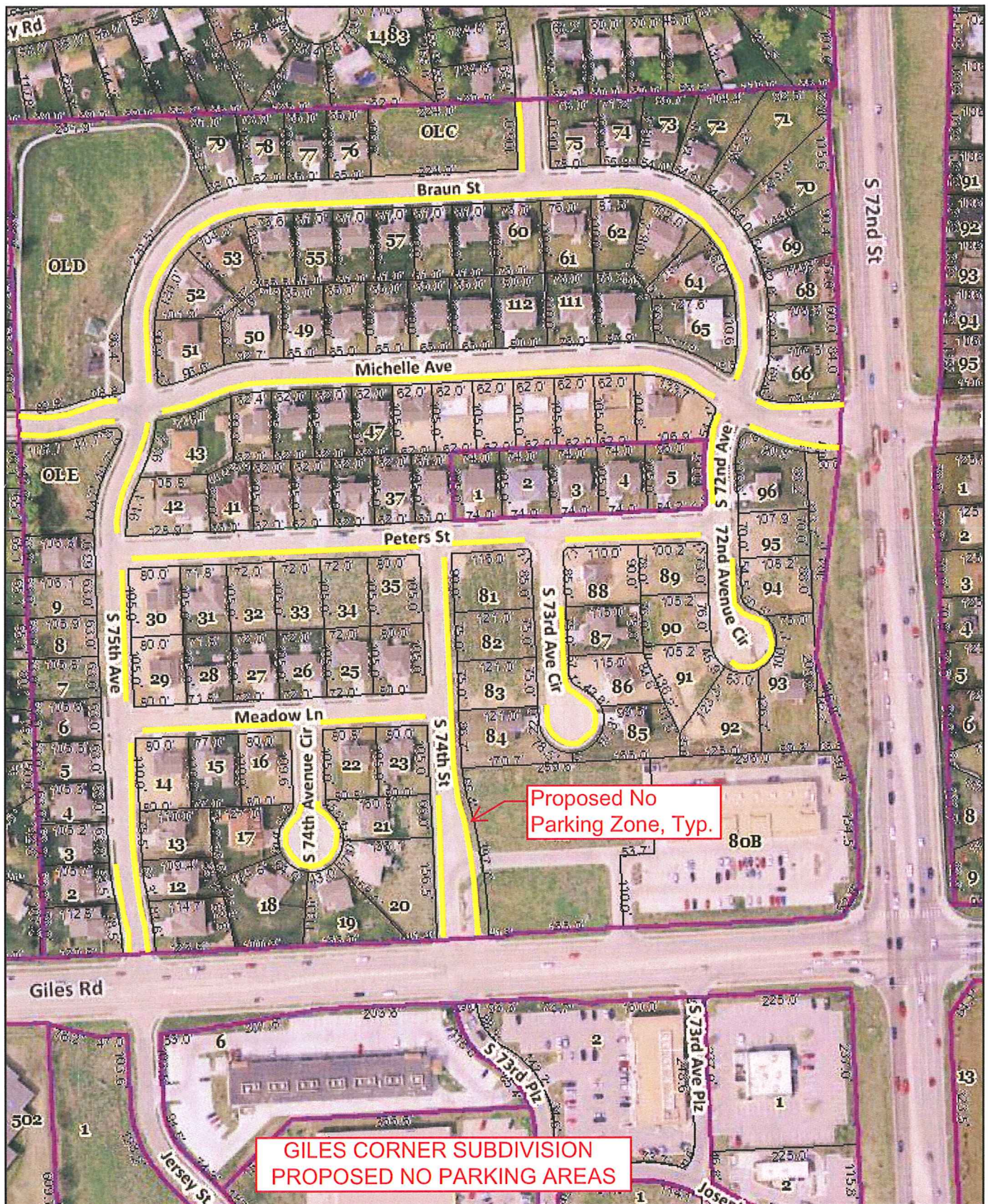
CITY OF LA VISTA

Douglas Kindig, Mayor

ATTEST:

Pamela A. Buethe, CMC
City Clerk

Sarpy County, Nebraska



Disclaimer: This data is for informational purposes only, and should not be substituted for a true titles search, property appraisal, survey, or for zoning district verification. Sarpy County and the Sarpy County GIS Coalition assume no legal responsibility for the information contained in this data.

Map Scale
1 inch = 200 feet

6/10/2011