

AGENDA ITEM 4 E

AMENDMENTS TO THE CITY OF LA VISTA ZONING MAP

Memorandum



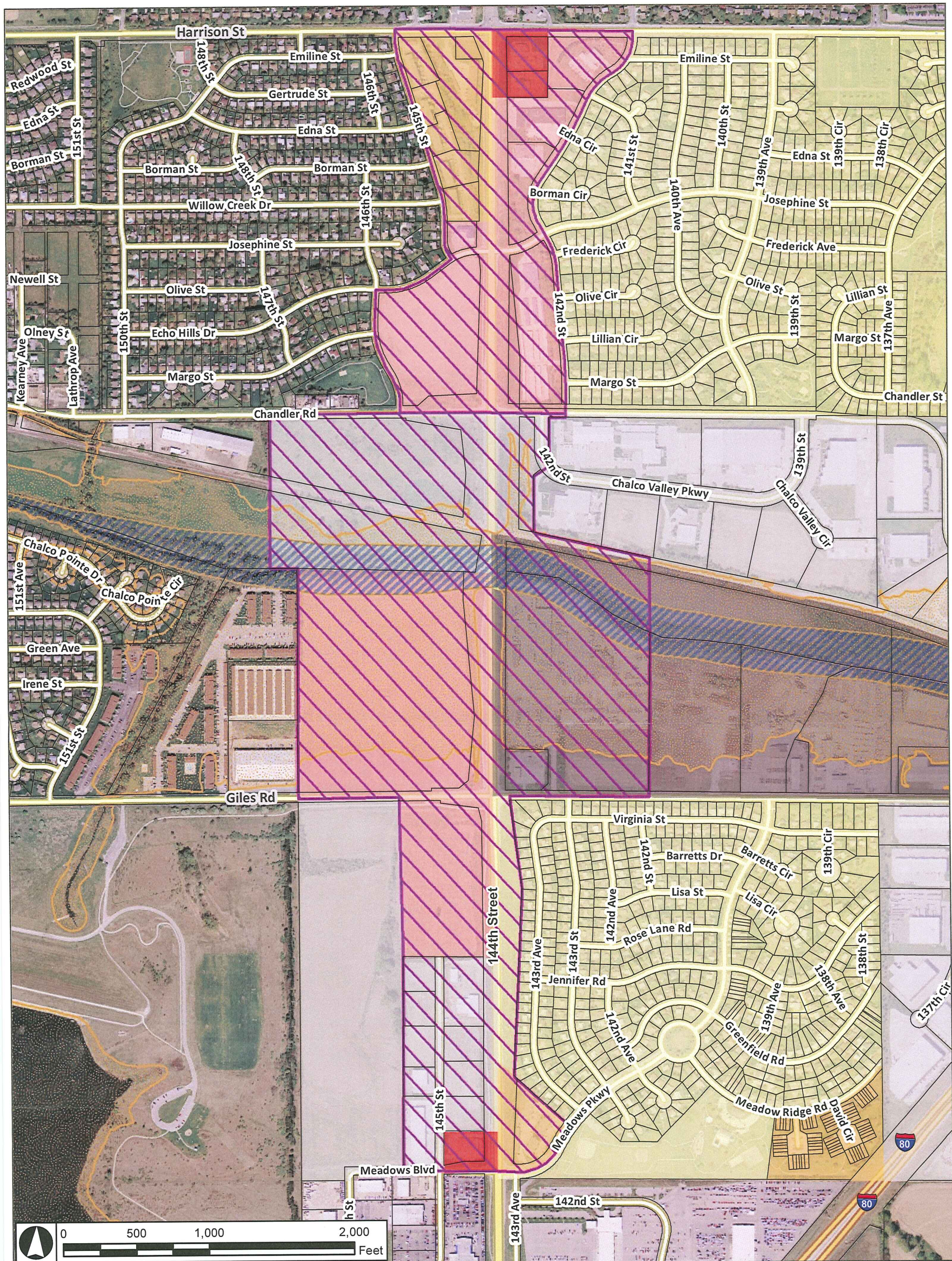
To: Planning Commission
From: Christopher Solberg, City Planner
Date: 2/13/2012
Re: Amendment to City of La Vista Zoning Map

After the expansion of the City's Extraterritorial Jurisdiction (ETJ) and the amendment to the official Future Land Use Map, the official Zoning Map is required to be amended to include those areas incorporated into the ETJ through the expansion.

Staff has reviewed the current Zoning Map of Sarpy County in conjunction with this activity. Staff concurs with Sarpy County's zoning designations and have developed amendments to the City's Zoning Map to reflect the similar zoning district as depicted in within that map.

RECOMMENDATION:

Staff recommends the adoption of the amendment to the City of La Vista Zoning Map.



Proposed Zoning

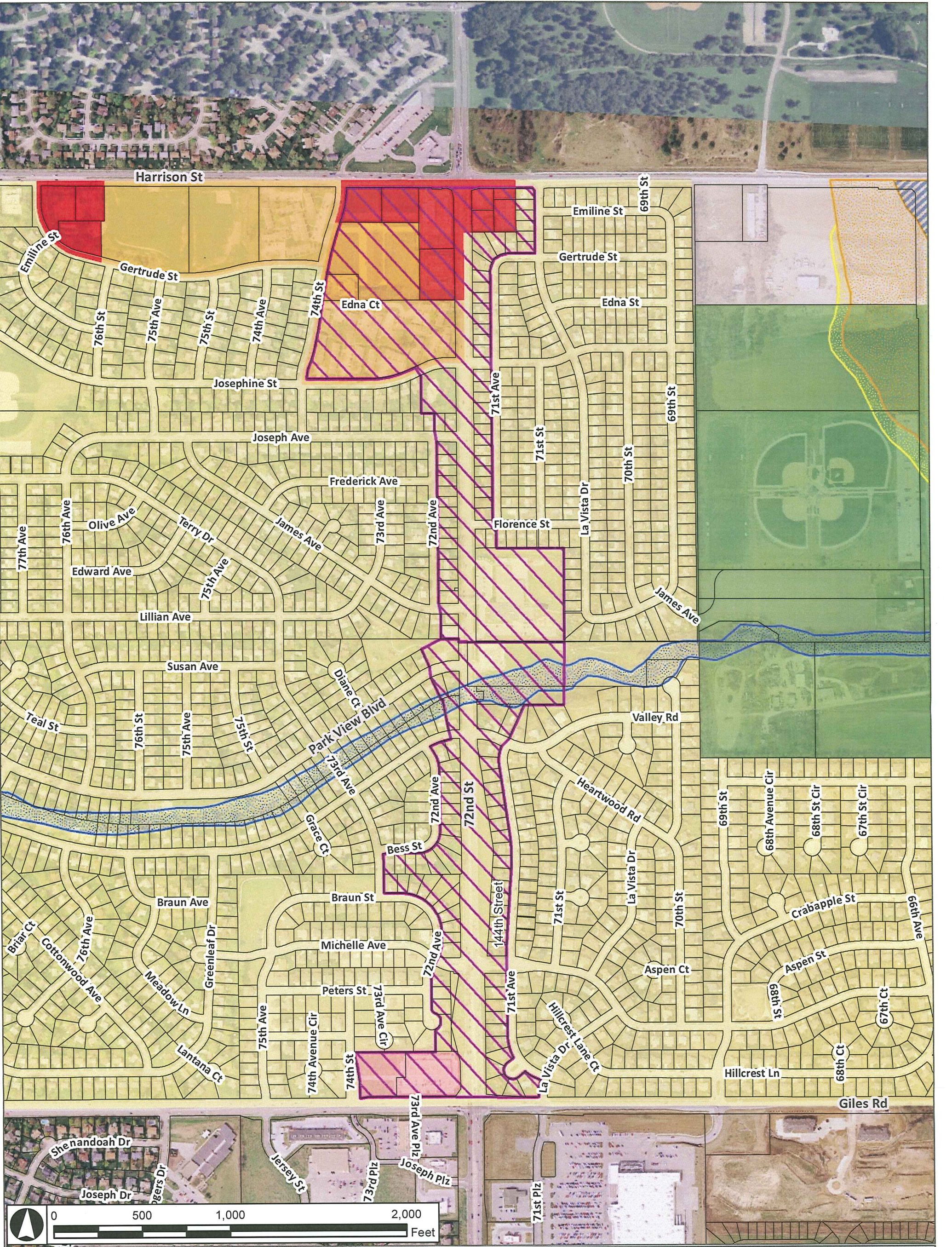
Zoning		Gateway Corridor	FLOODWAY
TA	I-2		
C-1	R-1		FLOODWAY
C-2	R-2		A - 100-Year Flood Zone
C-3	R-3		AE - 100-Year Flood Zone, Detailed Study
I-1	R-4		500-Year Flood Zone

Expansion of ETJ

February 7, 2012

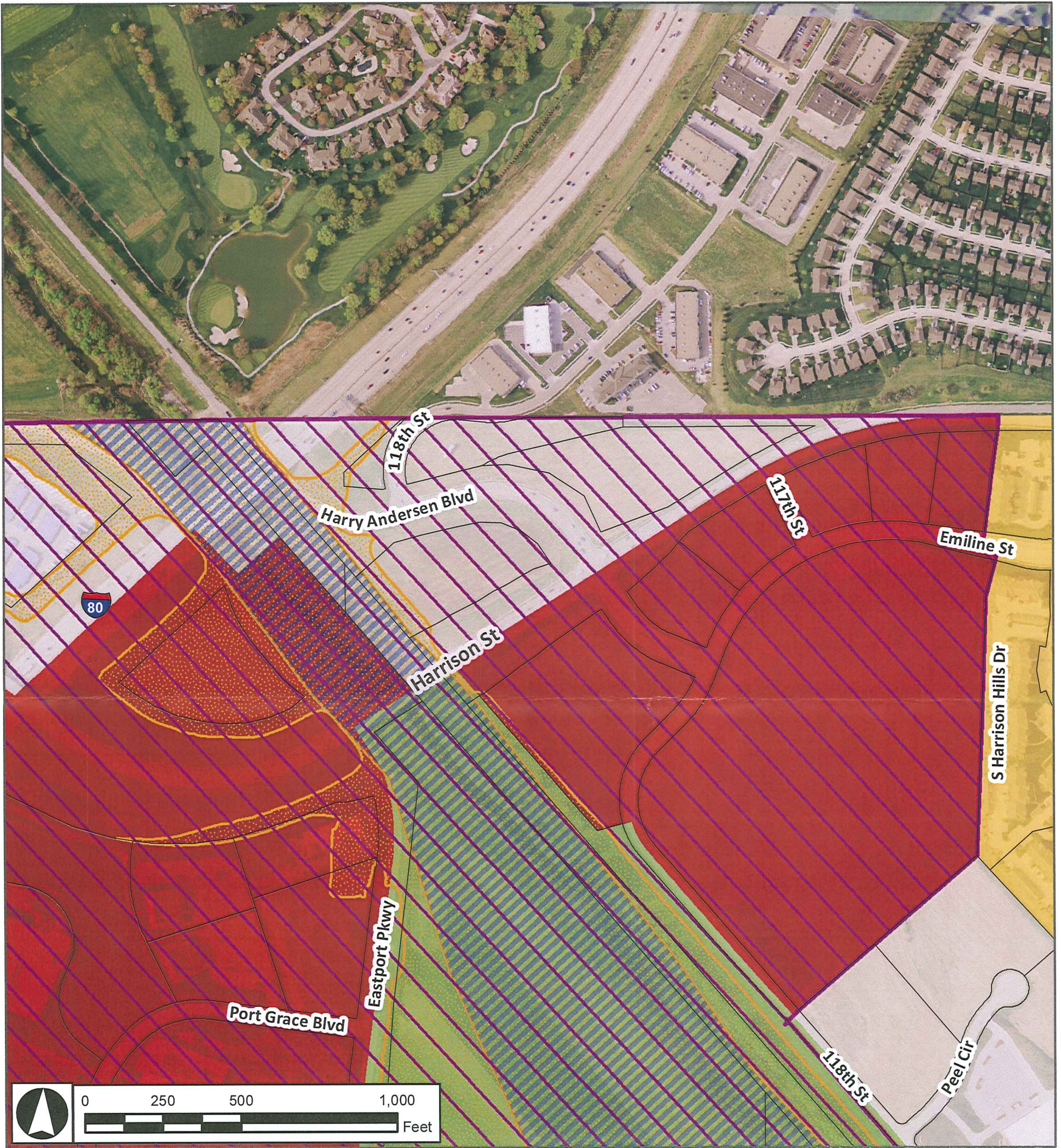
CAS





Proposed Zoning

Zoning			
TA	I-2	Gateway Corridor	
C-1	R-1	FLOODWAY	
C-2	R-2	FLOODWAY	
C-3	R-3	A - 100-Year Flood Zone	
I-1	R-4	AE - 100-Year Flood Zone, Detailed Study	
		500-Year Flood Zone	

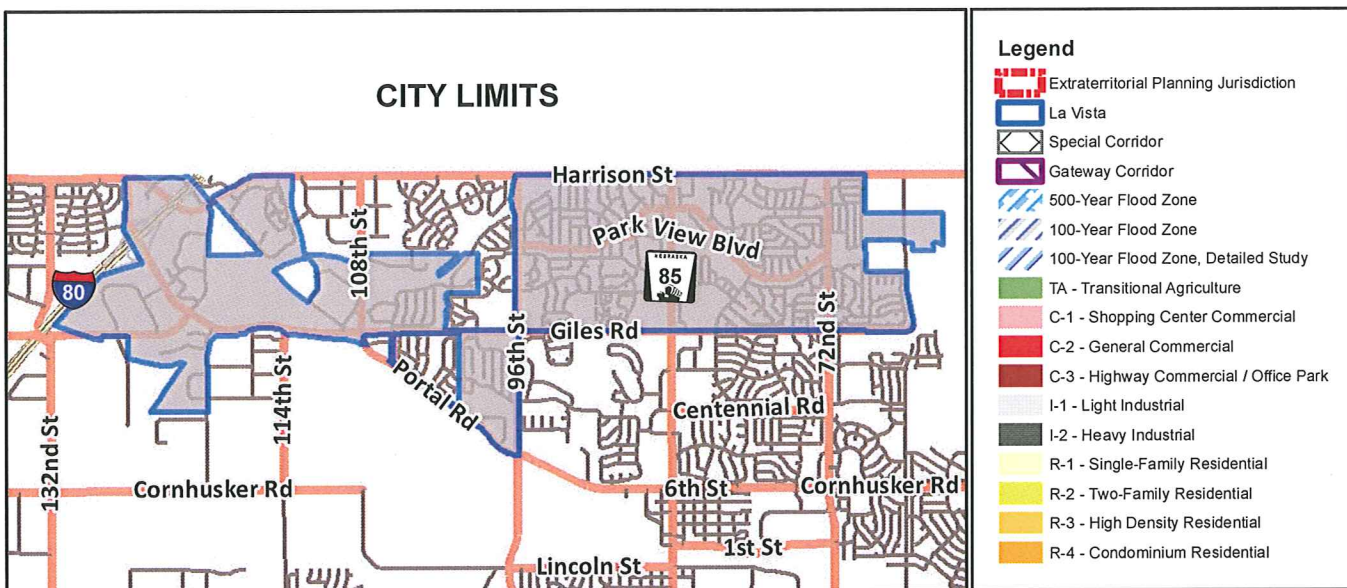
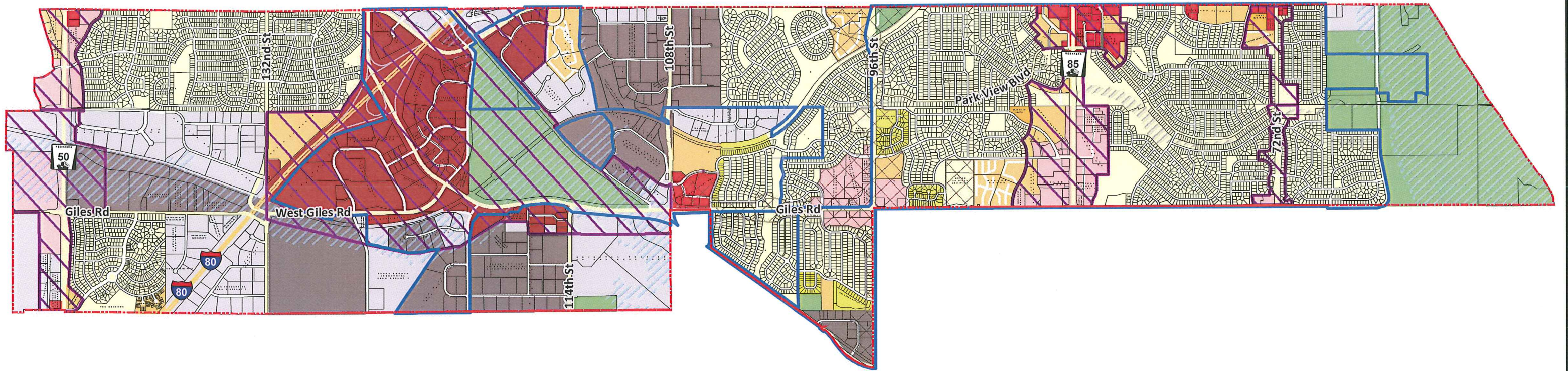


Zoning Map Amendment - Gateway Corridor Overlay

Harrison Street and Harry Anderson Blvd.

February 16, 2012
CAS





This is to certify that this Official Zoning Map supercedes and replaces the Official Zoning Map adopted November 20, 2001, by Ordinance No. 848 of the City of La Vista, Nebraska.

Signed:

Douglas Kindig, Mayor

Attest:

Pamela A. Buethe, City Clerk